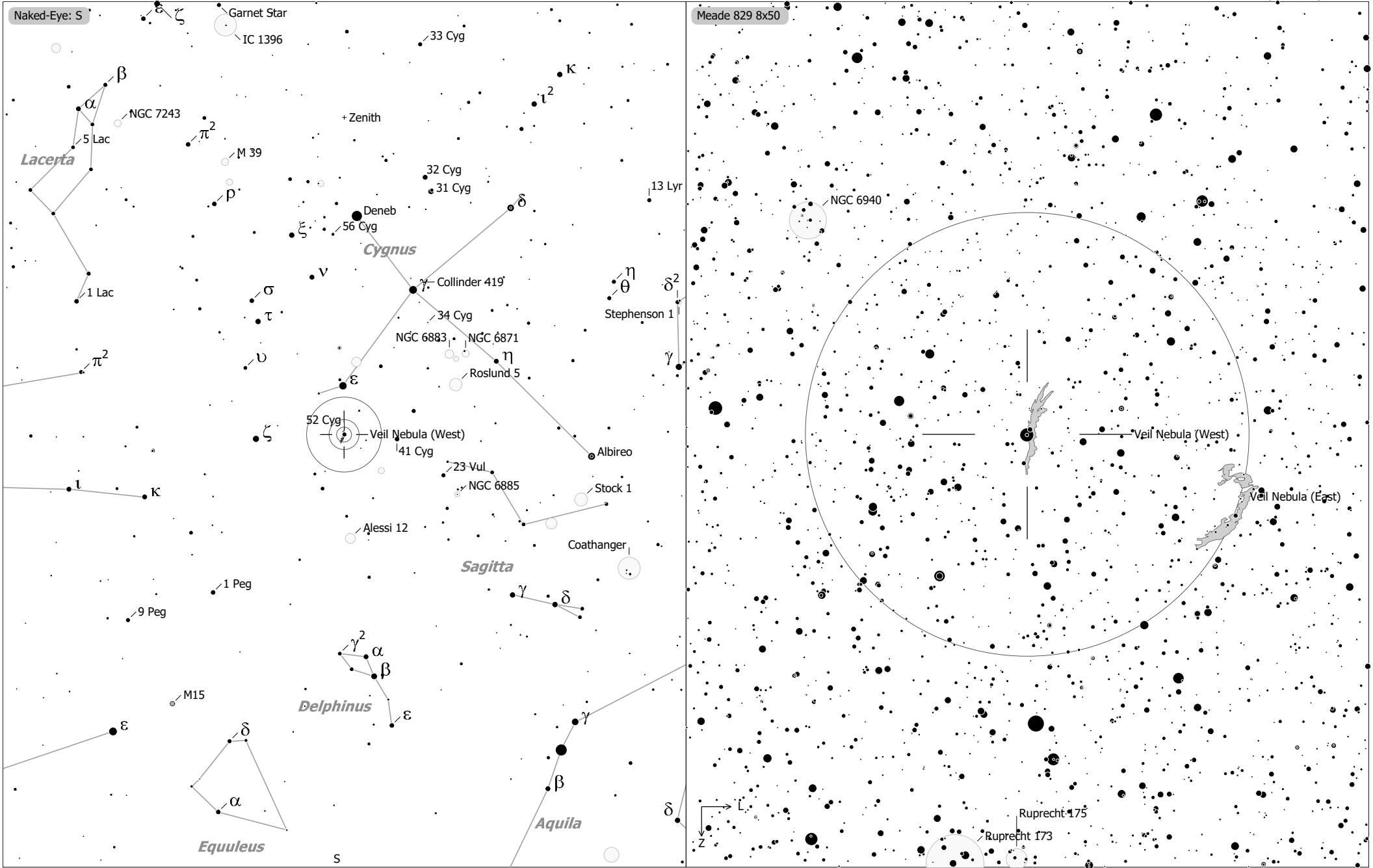


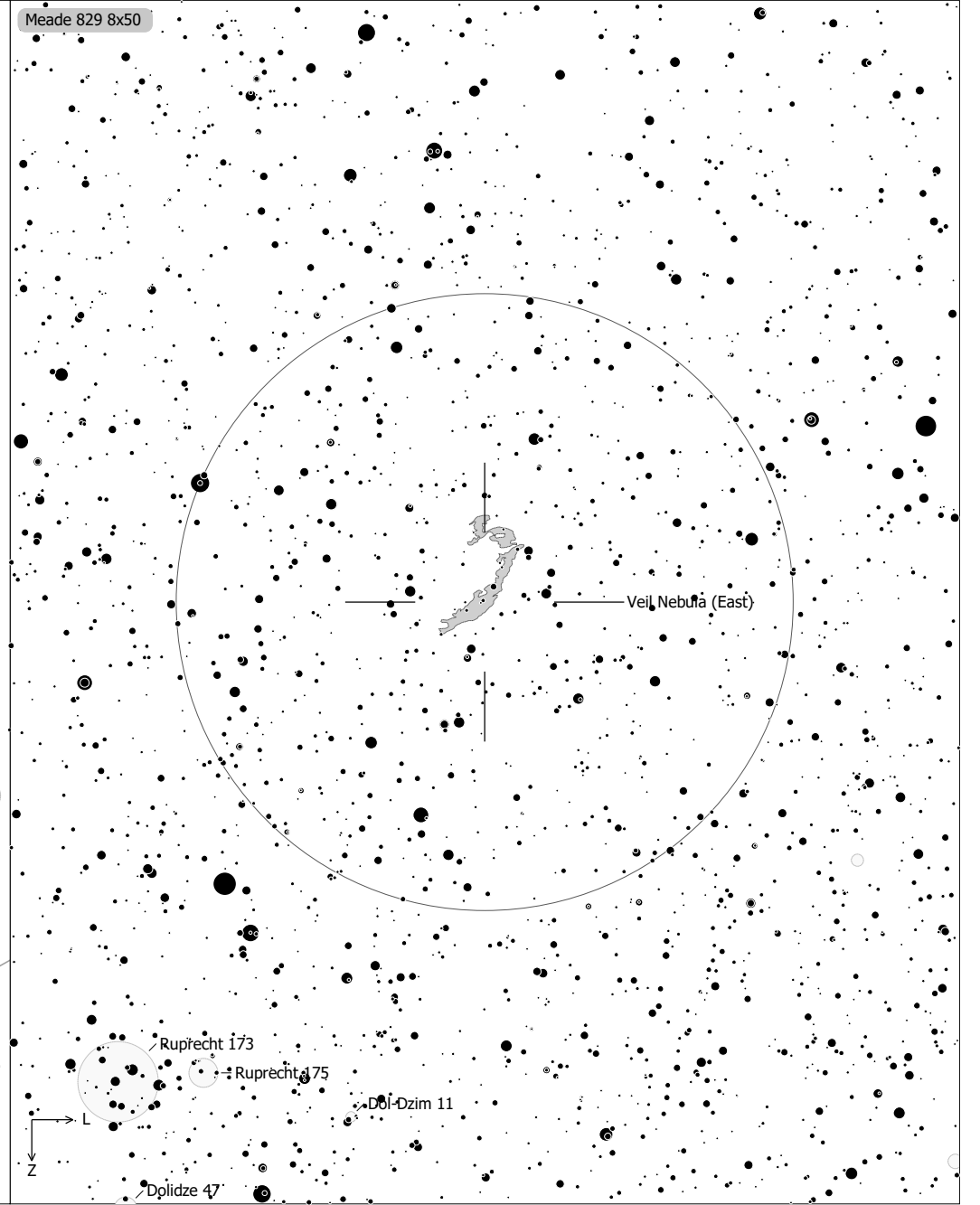
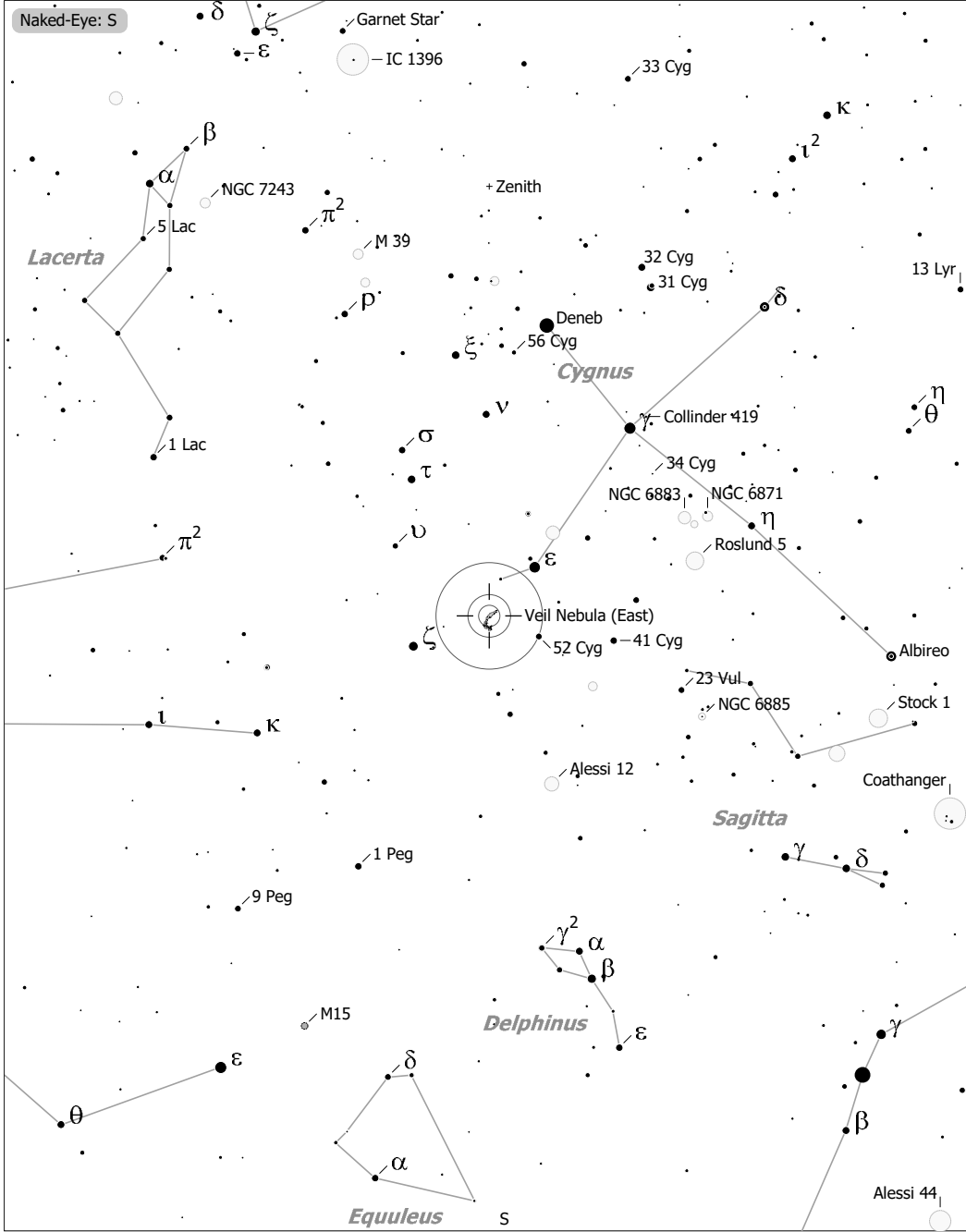
Objekte des Monats: Zirkusnebel (NGC 6960)



Veil Nebula (West) (Supernova Remnant)
 aka NGC 6960, LBN 191, H V-15
 R.A. 20h45m42.0s Dec. +30°43'00" J2000 (Cyg)
 Magnitude: 7.00 Size: 63.0' x 6.0'

- | | | | | | |
|---|--------------|---|------------|---|------------|
| × | Skymark | ◻ | SN Remnant | ☄ | Comet |
| ◻ | Ref. Neb. | ○ | Galaxy | ○ | Galaxy Gr. |
| ◊ | Dark Neb. | ○ | Galaxy Gr. | ● | Quasar |
| ● | Globule | ● | Planetary | ◻ | HII Region |
| ○ | Open Cl. | ● | Planetary | | |
| ● | Globular Cl. | ◻ | HII Region | | |
-
- | | | |
|------|-----|-----|
| • 10 | ● 7 | ● 4 |
| • 11 | ● 8 | ● 5 |
| | ● 9 | ● 6 |

Objekte des Monats: Zirkusnebel (NGC 6992/6995)



Veil Nebula (East) (Supernova Remnant)
 aka NGC 6992, Sh 2-103, H V-14, Ced 182b
 R.A. 20h56m24.0s Dec. +31°43'00" J2000 (Cyg)
 Magnitude: 7.00 Size: 60.0' x 7.0'

- | | | | | | |
|---|--------------|---|-------------|---|------------|
| × | Skymark | □ | SN Remnant | ☾ | Comet |
| ◻ | Ref. Neb. | ○ | Galaxy | ○ | Galaxy |
| ◇ | Dark Neb. | ○ | Galaxy Gr. | ○ | Galaxy Gr. |
| ● | Globule | ● | Quasar | ● | Planetary |
| ○ | Open Cl. | ● | Planetary | ○ | Planetary |
| ● | Globular Cl. | □ | H II Region | | |

- | | | |
|------|-----|-----|
| • 10 | ● 7 | ● 4 |
| • 11 | ● 8 | ● 5 |
| | ● 9 | ● 6 |