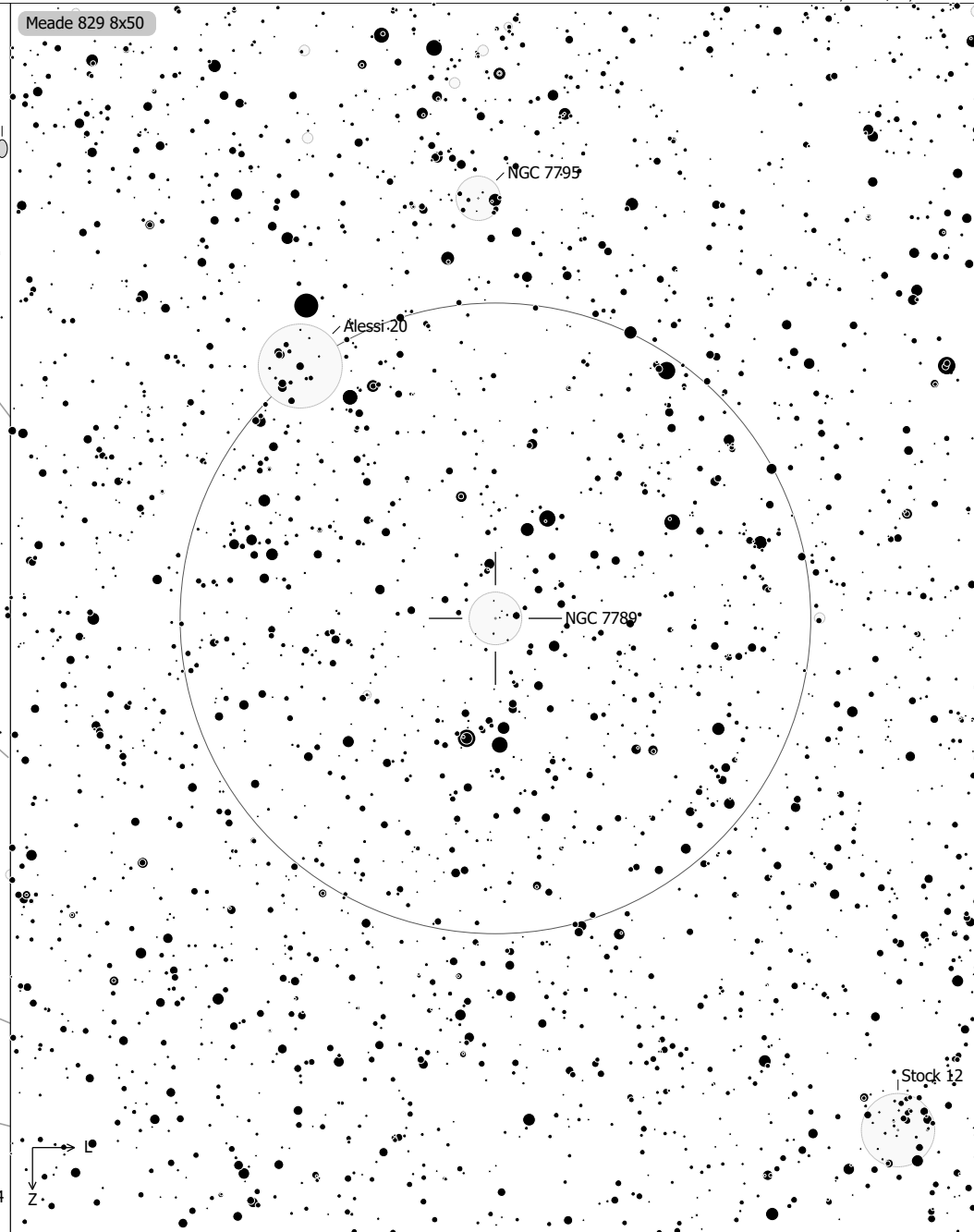
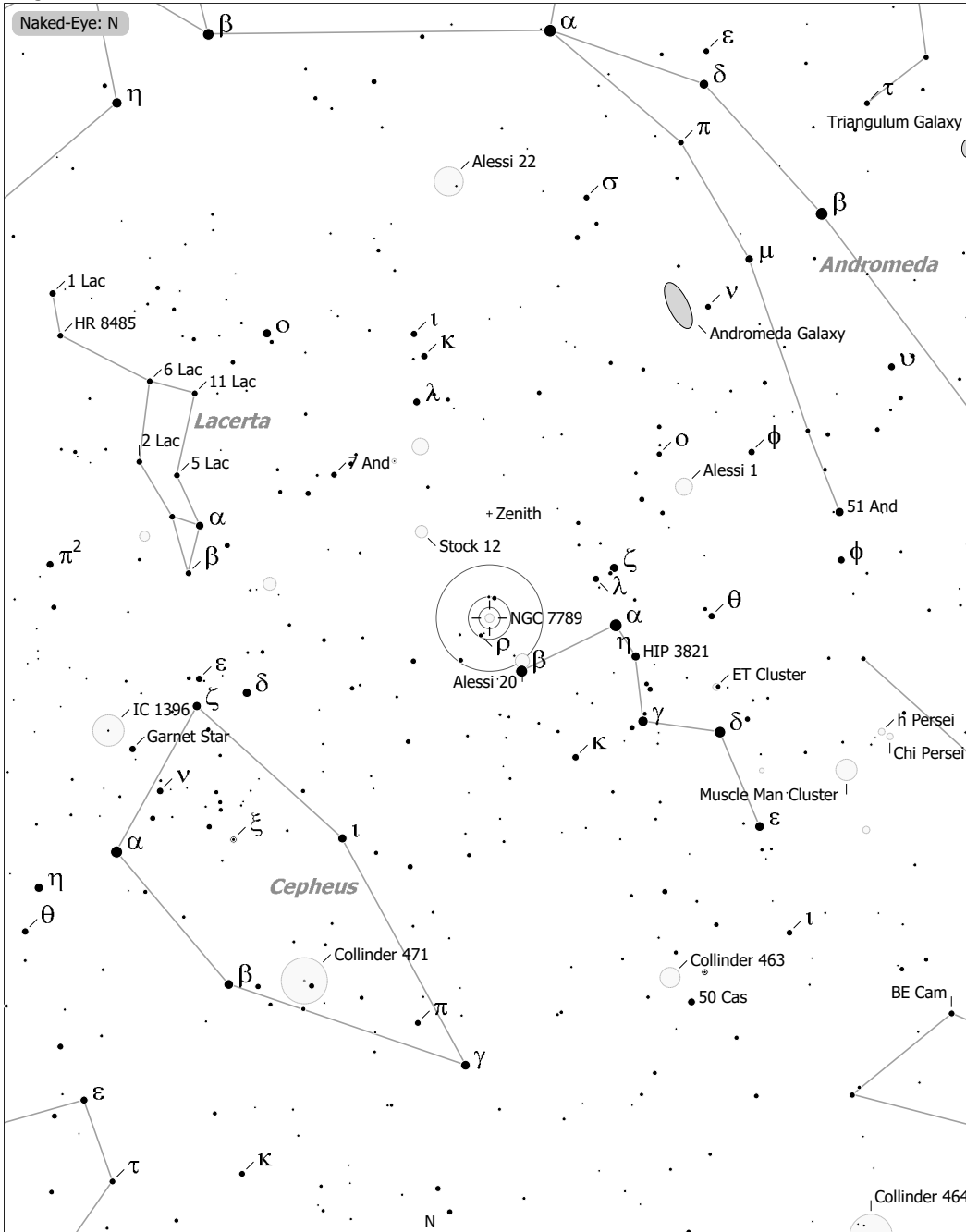


# Objekte des Monats: NGC 7789



NGC 7789 (Open Cluster)  
 aka H VI-30, OCL 269  
 R.A. 23h57m24.0s Dec. +56°42'30" J2000 (Cas)  
 Magnitude: 6.00 Size: 25.0' Distance: 7600 ly

- |                |              |      |     |     |
|----------------|--------------|------|-----|-----|
| ◻ Ref. Neb.    | ○ Galaxy     | • 10 | ● 7 | ● 4 |
| ◇ Dark Neb.    | ○ Galaxy Gr. | • 11 | ● 8 | ● 5 |
| ● Globule      | ● Quasar     | • 9  | ● 6 |     |
| ○ Open Cl.     | ● Planetary  |      |     |     |
| ● Globular Cl. | ◻ HII Region |      |     |     |
| × Skymark      | ◻ SN Remnant |      |     |     |