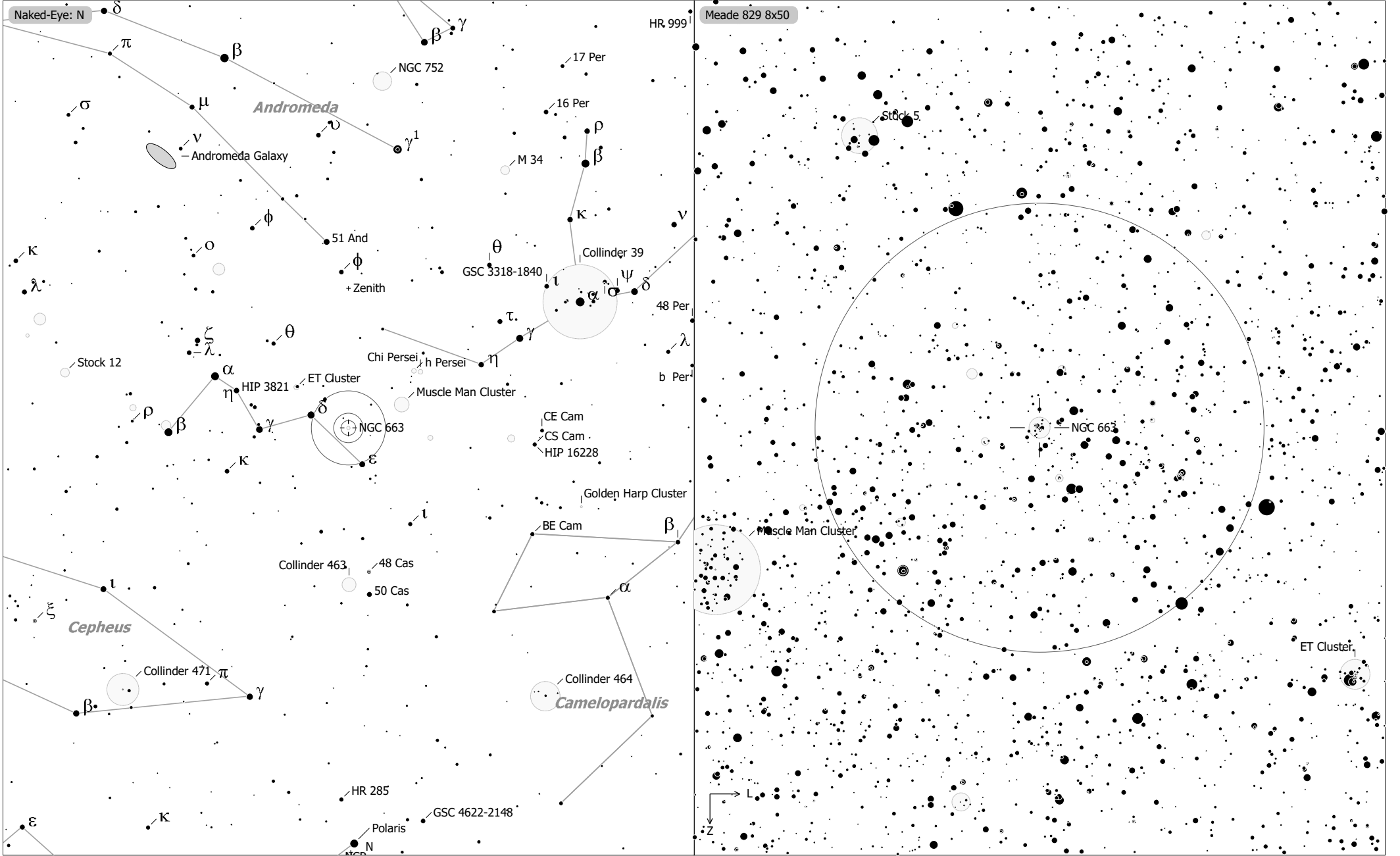


Objekte des Monats: NGC 663



NGC 663 (Open Cluster)
 aka Collinder 20, H VI-31, Melotte 11, Raab 7, OCL 333
 R.A. 01h46m09.0s Dec. +61°14'06" J2000 (Cas)
 Magnitude: 6.20 Size: 14.0' Distance: 6400 ly

- | | | | | |
|----------------|---------------|------|-----|-----|
| ◇ Dark Neb. | ○ Galaxy | • 10 | ● 7 | ● 4 |
| ● Globule | • Quasar | • 11 | ● 8 | ● 5 |
| ○ Open Cl. | ● Planetary | • 9 | ● 6 | |
| ● Globular Cl. | □ H II Region | | | |
| × Skymark | □ SN Remnant | | | |
| | □ Ref. Neb. | | | |