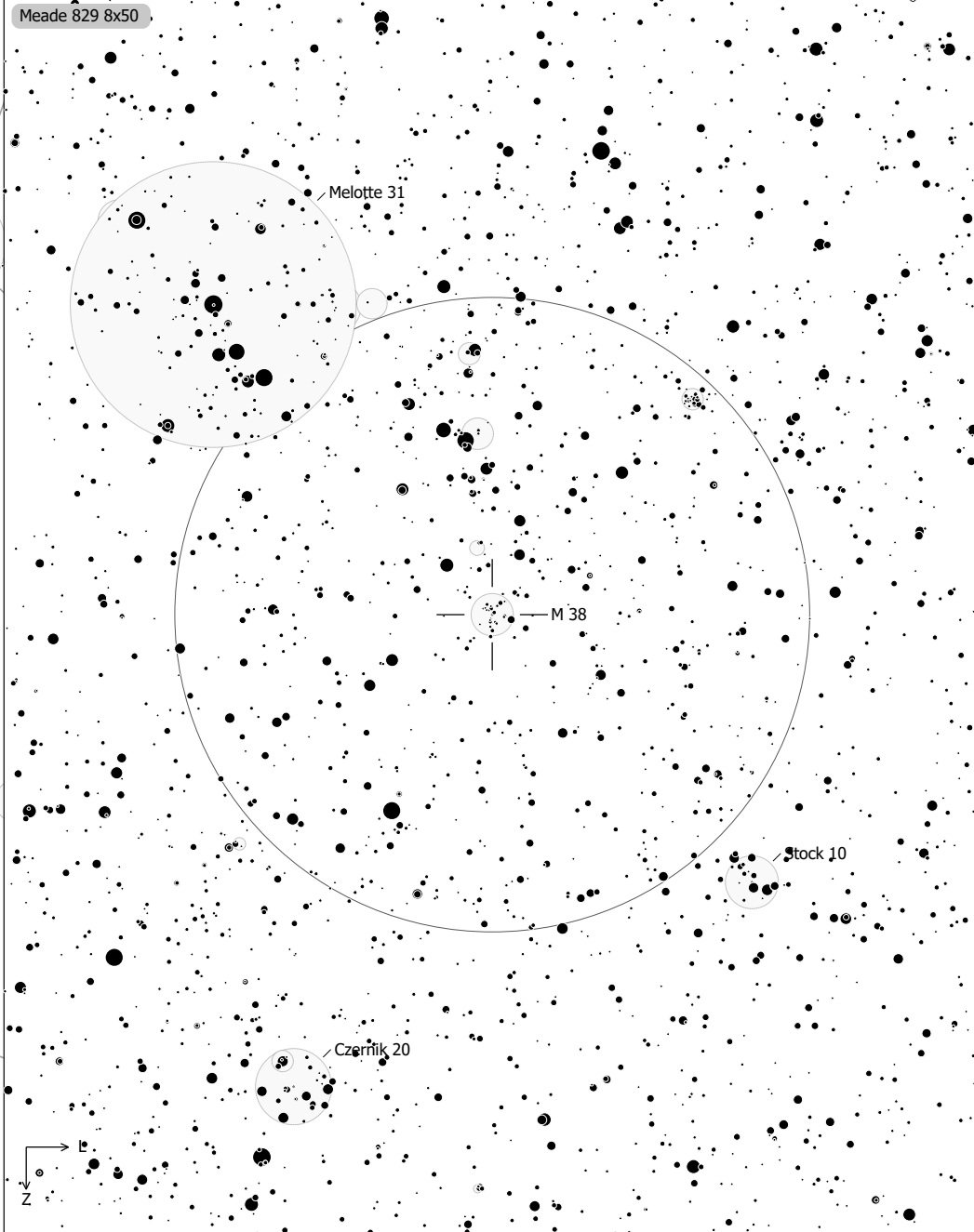
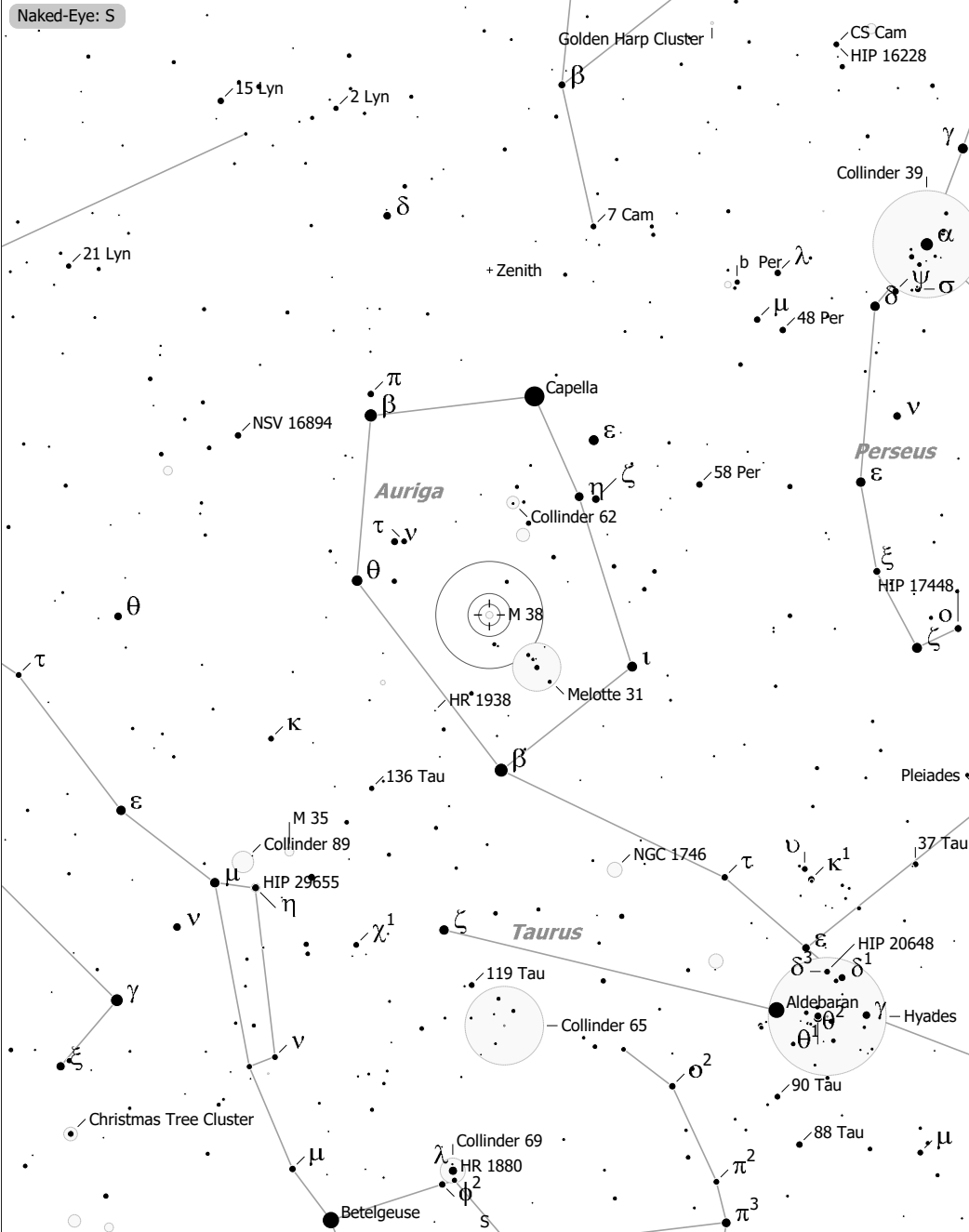


Objekte des Monats: Messier 38 & NGC 1907



M 38 (Open Cluster)
 aka NGC 1912, Collinder 67, Melotte 36, Raab 26, OCL 433
 R.A. 05h28m40.0s Dec. +35°50'54" J2000 (Aur)
 Magnitude: 5.90 Size: 20.0' Distance: 3500 ly

- | | | | | |
|----------------|--------------|------|-----|-----|
| ◻ Ref. Neb. | ○ Galaxy | • 10 | ● 7 | ● 4 |
| ◊ Dark Neb. | ○ Galaxy Gr. | • 11 | ● 8 | ● 5 |
| ● Globule | • Quasar | • 9 | ● 6 | |
| ○ Open Cl. | ● Planetary | | | |
| ● Globular Cl. | ◻ HII Region | | | |
| × Skymark | ◻ SN Remnant | | | |