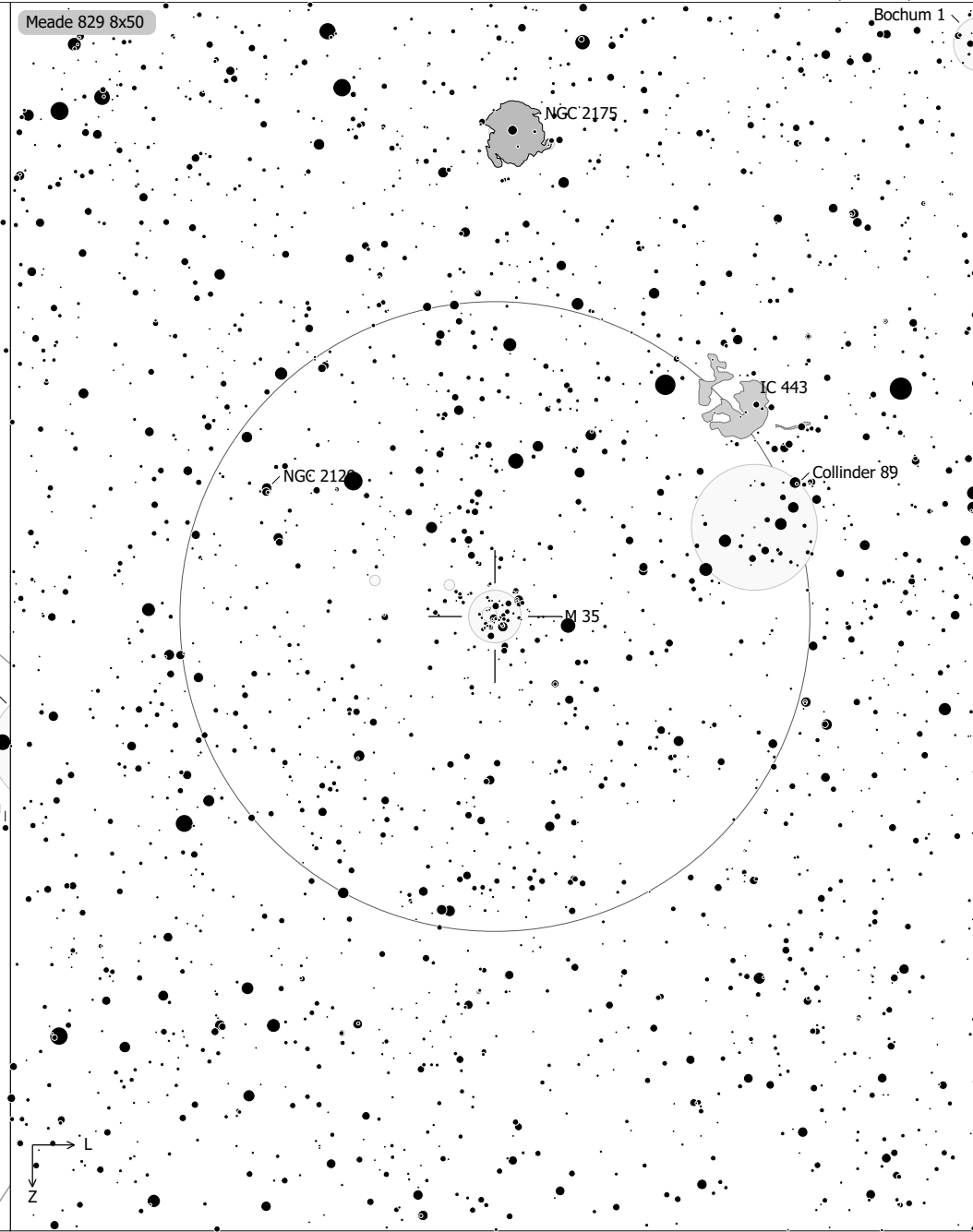
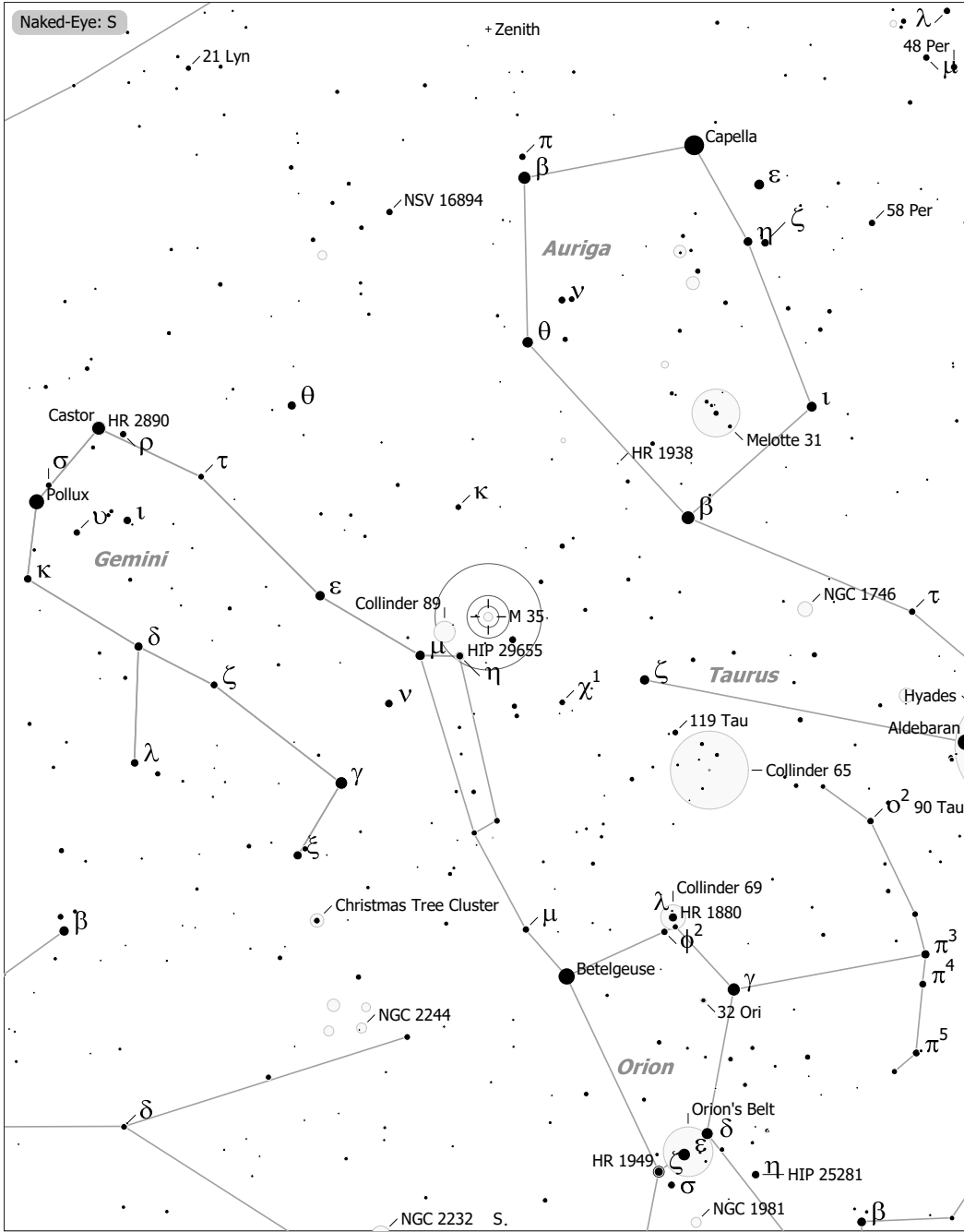


Objekte des Monats: Messier 35 & NGC 2158



M 35 (Open Cluster)
 aka NGC 2168, Collinder 82, Melotte 41, Raab 31, OCL 466
 R.A. 06h09m00.0s Dec. +24°21'00" J2000 (Gem)
 Magnitude: 5.20 Size: 25.0' Distance: 3000 ly

- | | | | | | |
|----------------|--------------|-------------|------|-----|-----|
| ✕ Skymark | ◻ SN Remnant | ☄ Comet | • 10 | • 7 | • 4 |
| ◻ Ref. Neb. | ◻ Dark Neb. | ◉ Galaxy | • 11 | • 8 | • 5 |
| ◊ Dark Neb. | ◉ Galaxy Gr. | • Quasar | • 9 | • 6 | |
| • Globule | • Open Cl. | • Planetary | | | |
| • Globular Cl. | ◻ HII Region | | | | |