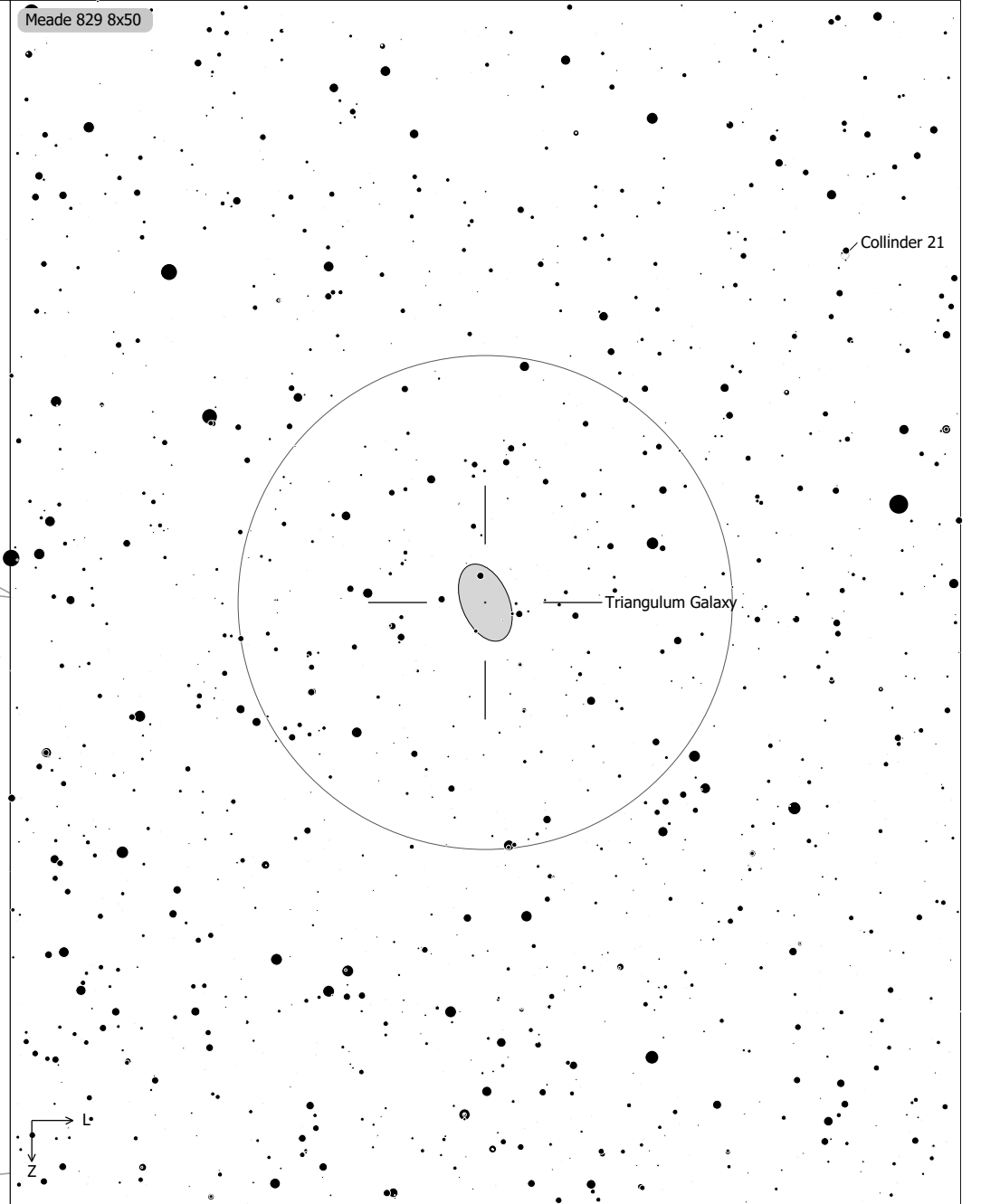
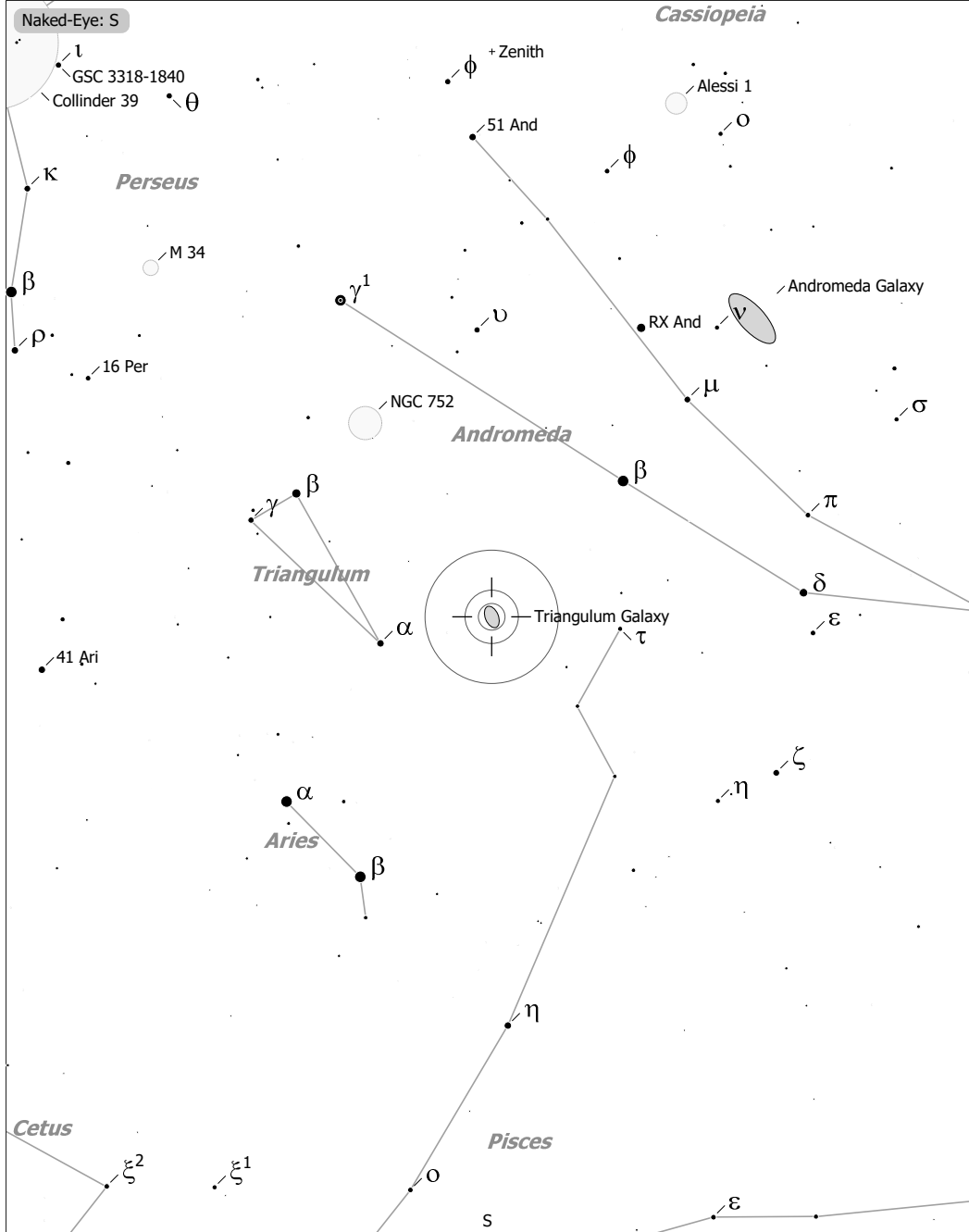


Objekte des Monats: Dreiecksgalaxie (Messier 33)



Triangulum Galaxy (Galaxy)
 aka Triangulum Pinwheel, M 33, NGC 598, MCG 5-4-69, UGC 1117, Z 502-110, H V-17, PGC 5818
 R.A. 01h33m50.9s Dec. +30°39'36" J2000 (Tri)
 Magnitude: 6.40 B Size: 61.7' x 36.3' Sc, Nearly face on SBr: 22.9 Mag/arcsec²

- | | | | | | | | | | |
|---|-----------|---|------------|---|--------------|---|----|---|---|
| × | Skymark | □ | SN Remnant | ☾ | Comet | ● | 8 | ● | 4 |
| □ | Ref. Neb. | ○ | Galaxy | ○ | Galaxy Gr. | ● | 9 | ● | 5 |
| ◇ | Dark Neb. | ○ | Galaxy Gr. | ● | Quasar | ● | 10 | ● | 6 |
| ● | Globule | ● | Planetary | ● | Globular Cl. | □ | 11 | ● | 7 |