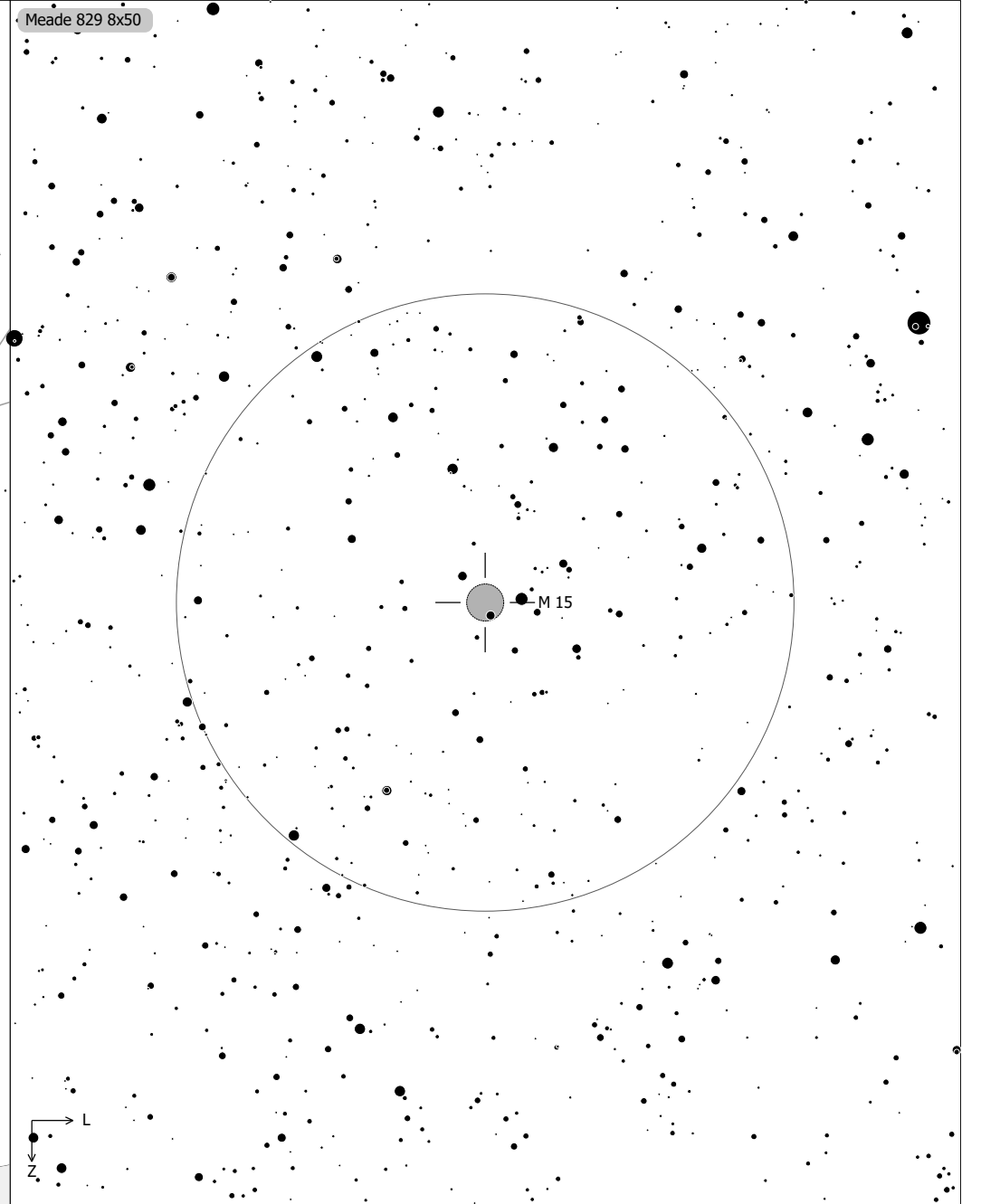
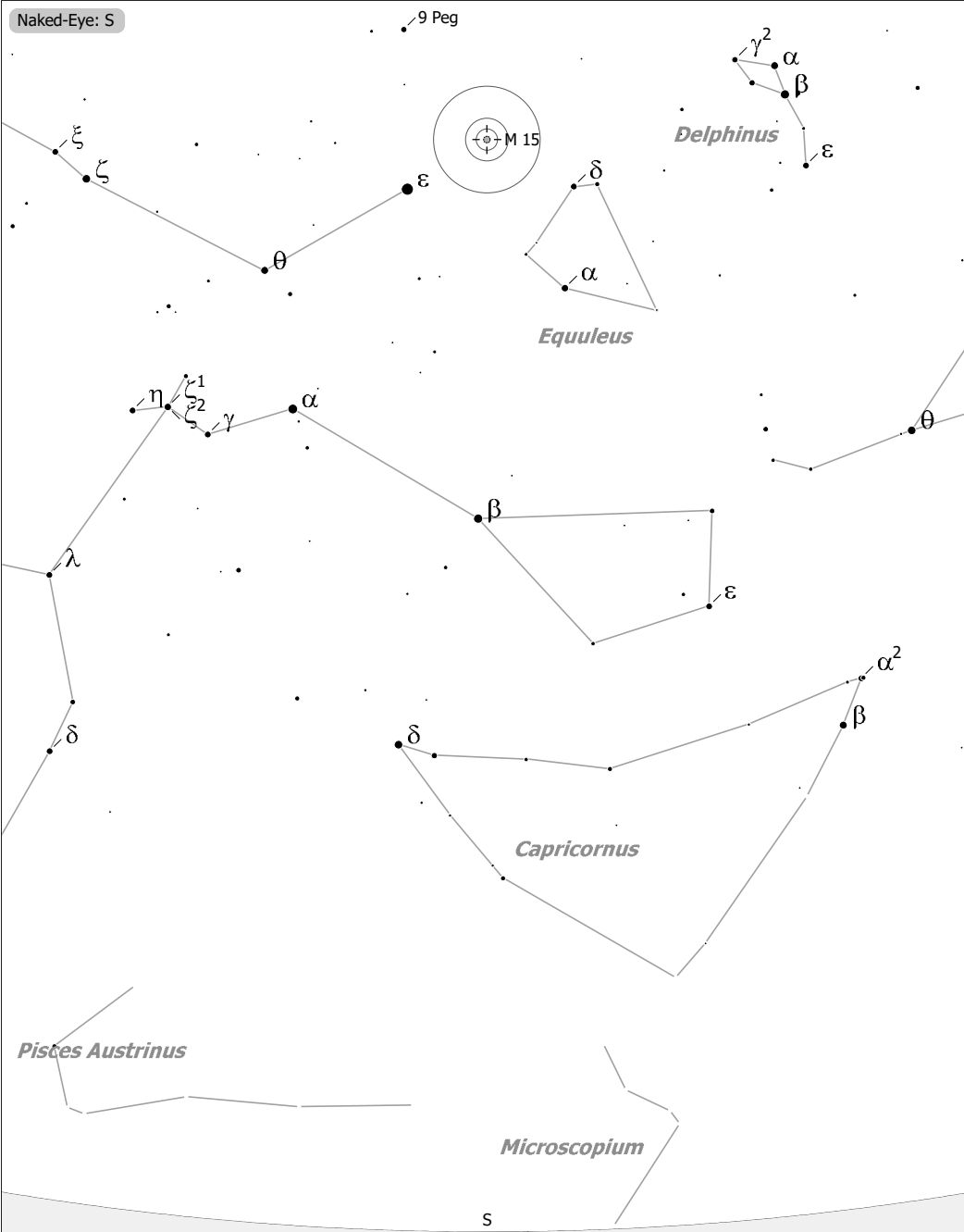


Objekte des Monats: Großer Pegasushaufen (Messier 15)

Naked-Eye: S

9 Peg

Meade 829 8x50



M 15 (Globular Cluster)
 aka NGC 7078
 R.A. 21h29m58.0s Dec. +12°10'00" J2000 (Peg)
 Magnitude: 6.30 Size: 18.0' Distance: 42000 ly

□ = Ref. Neb.	○ = Galaxy	● 9	● 6	● 3
◇ = Dark Neb.	○ = Galaxy Gr.	● 10	● 7	● 4
● = Globule	● = Quasar	● 8	● 5	
● = Open Cl.	● = Planetary			
● = Globular Cl.	□ = H II Region			
× = Skymark	□ = SN Remnant			