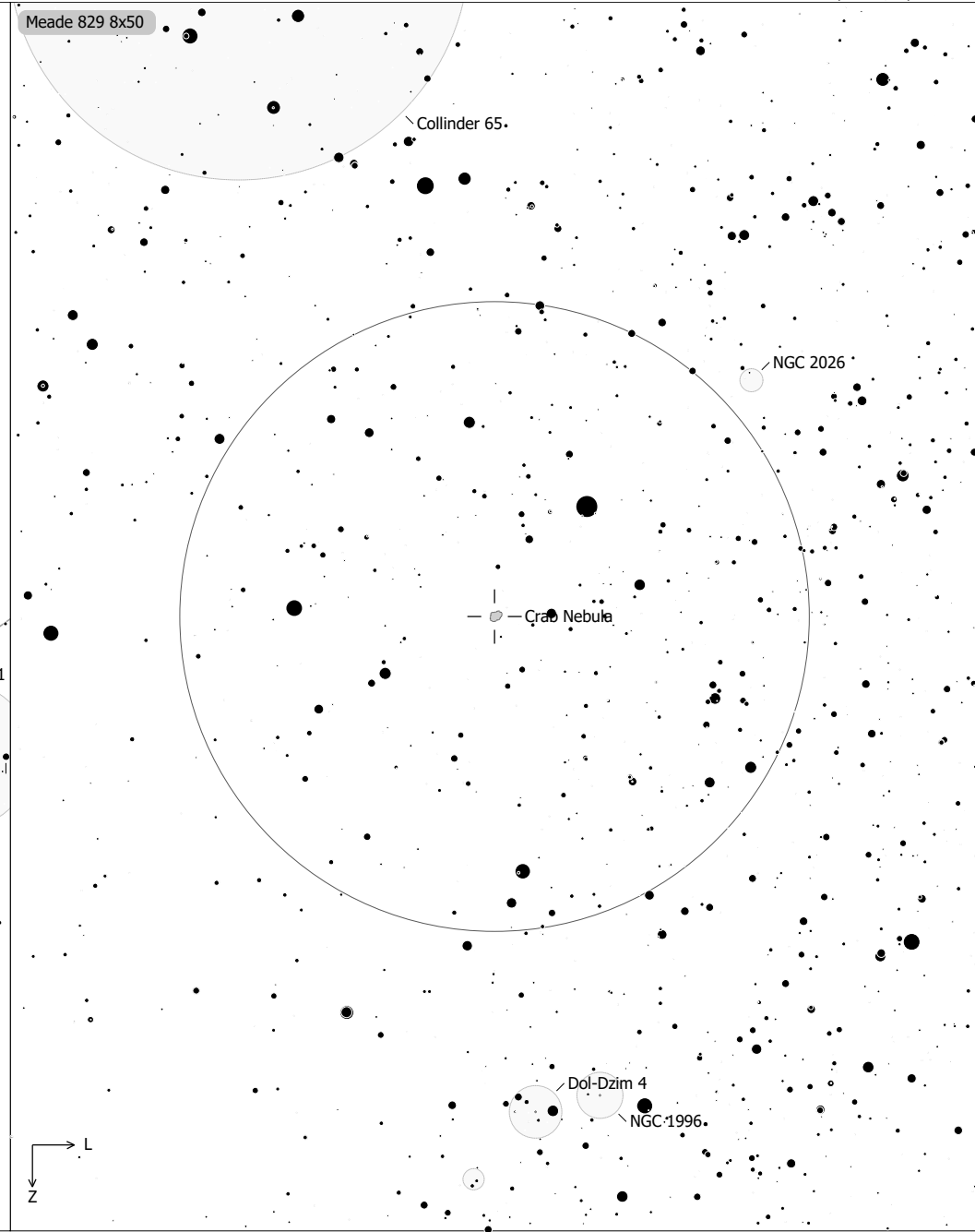
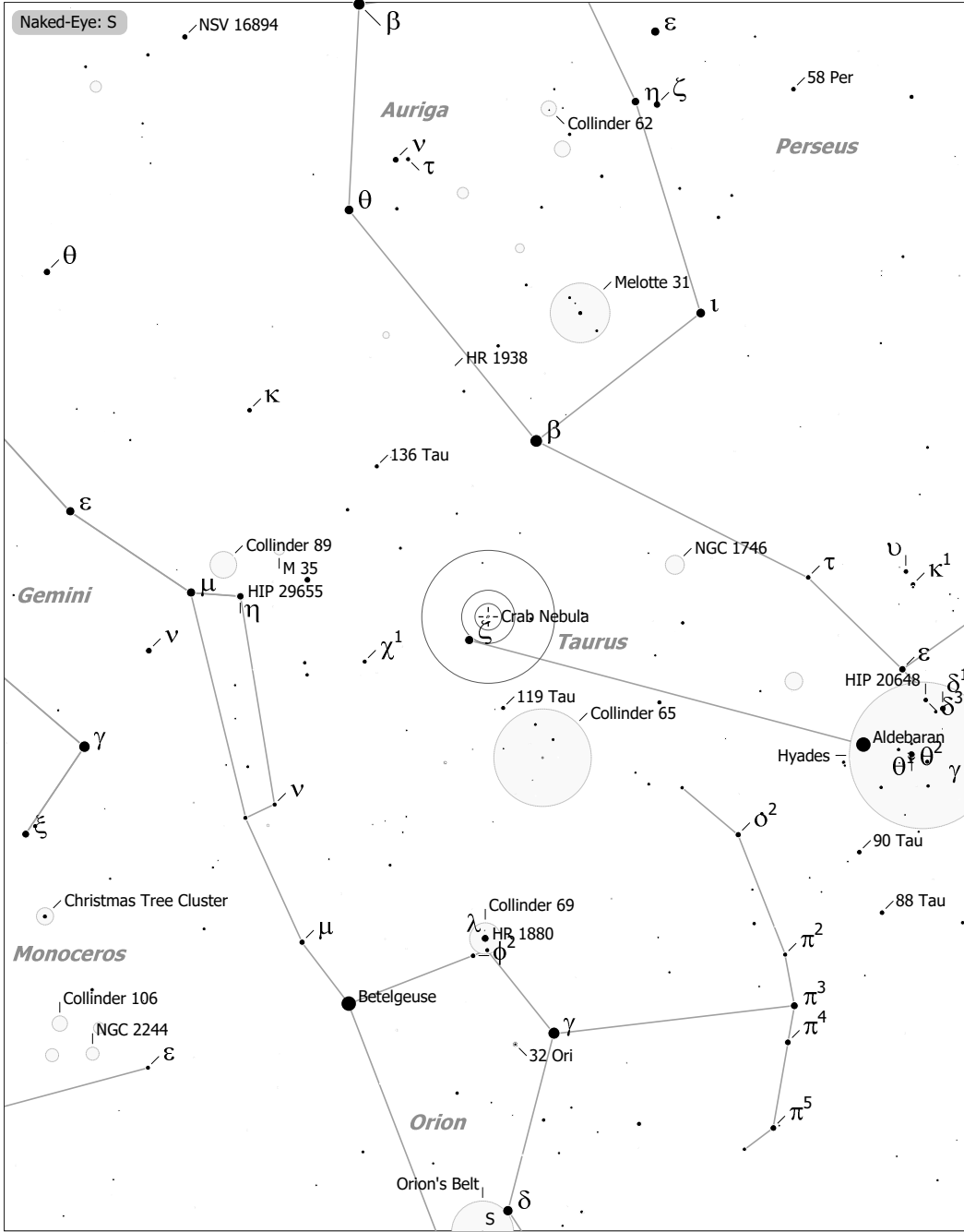


Objekte des Monats: Krebsnebel Messier 1



Crab Nebula (Supernova Remnant)
 aka M 1, NGC 1952, Sh 2-244, LBN 833
 R.A. 05h34m30.0s Dec. +22°01'00" J2000 (Tau)
 Magnitude: 8.40 Size: 8.0'

✕ Skymark	□ SN Remnant	☉ Comet	● 8	● 4
□ Ref. Neb.	◇ Dark Neb.	○ Galaxy	● 9	● 5
● Globule	○ Open Cl.	○ Galaxy Gr.	● 10	● 6
● Globular Cl.	□ HII Region	● Quasar	● 11	● 7