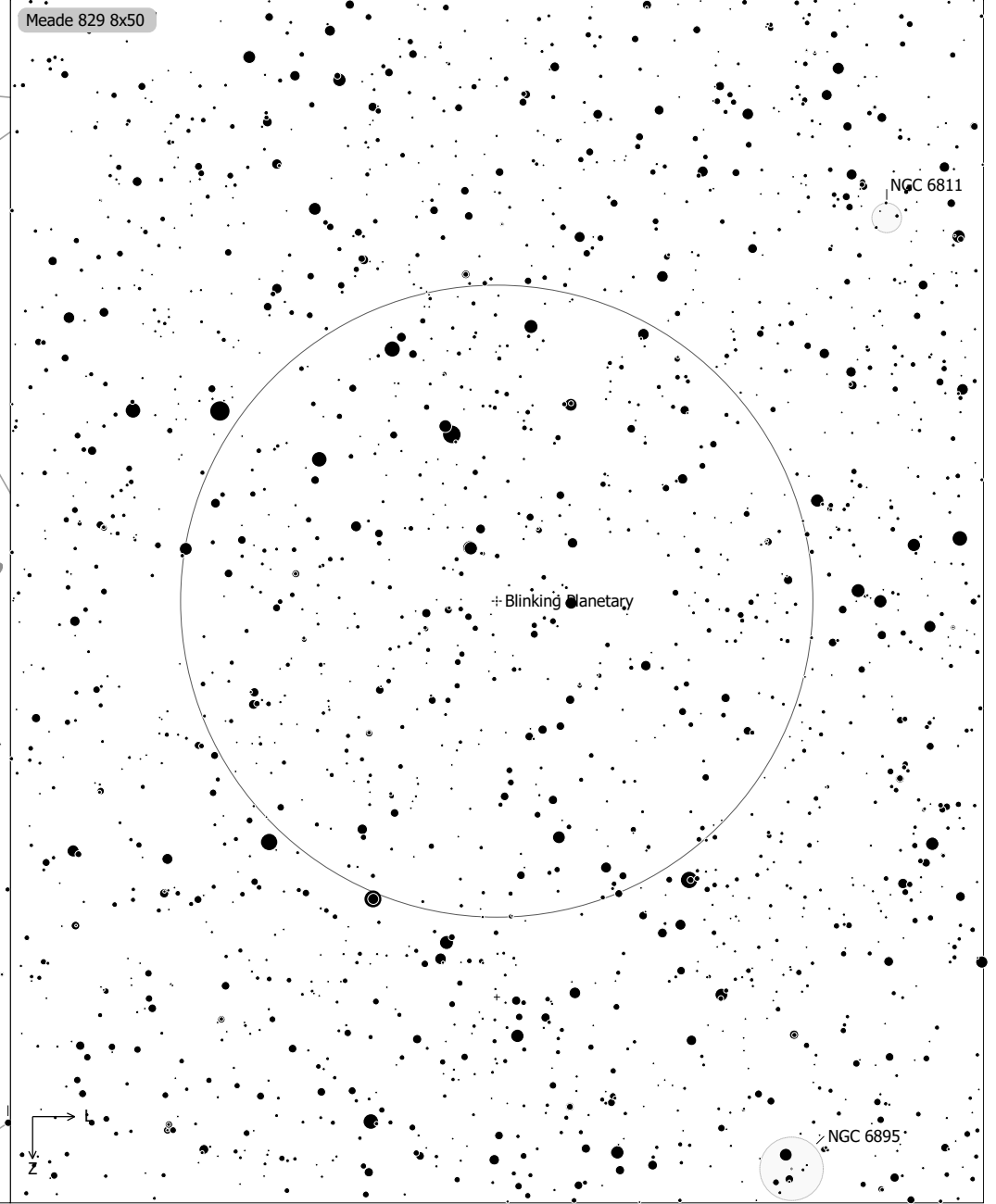
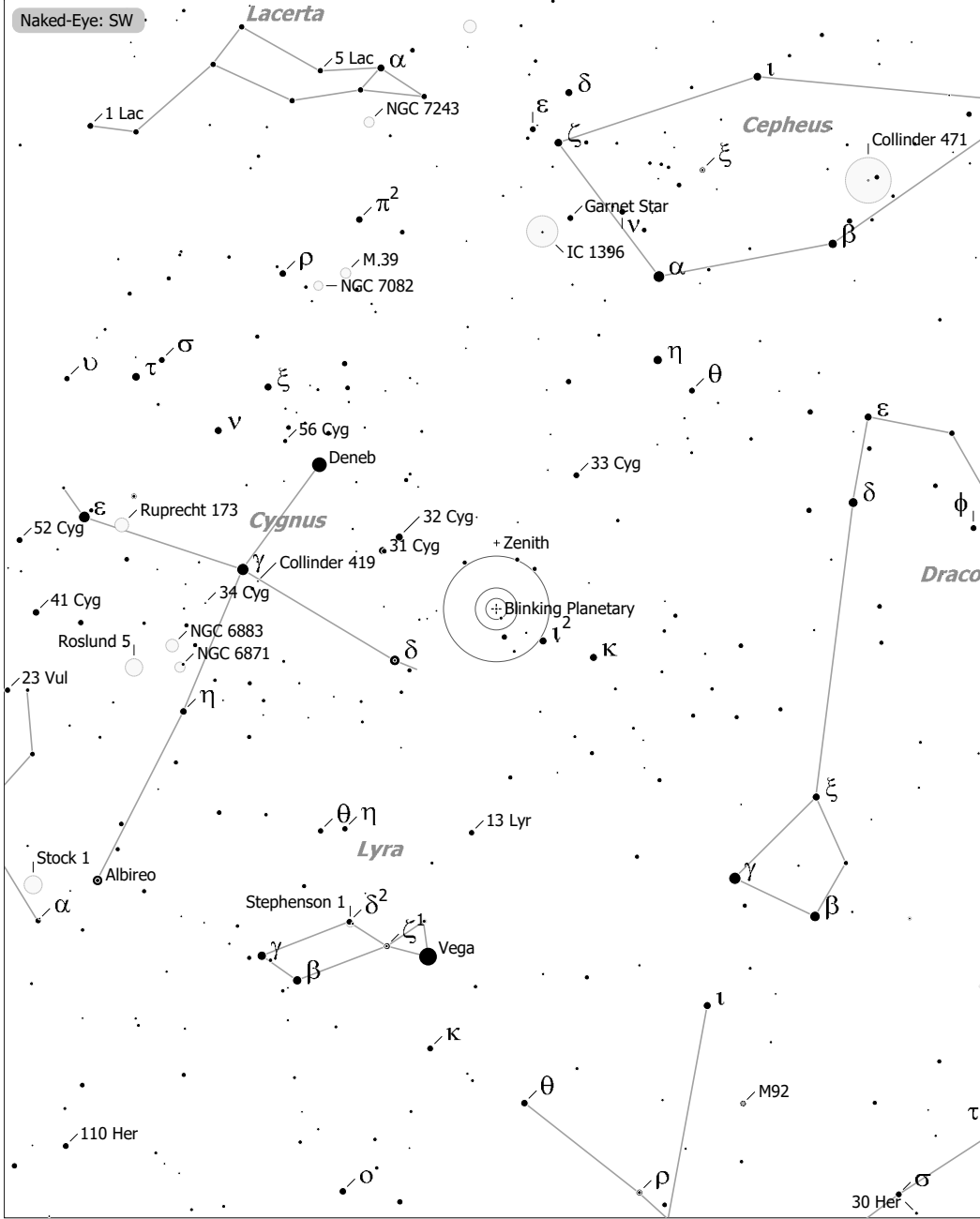


Objekte des Monats: Blinkender Planetarischer Nebel (NGC 6826)



Blinking Planetary (Planetary Nebula)
 aka NGC 6826, PN G083.5+12.7, PK 083-12.1, ARO 13, H IV-73
 R.A. 19h44m48.2s Dec. +50°31'30" J2000 (Cyg)
 Magnitude: 8.80 Size: 27" SBr: 15.7 Mag/arcsec² Distance: 3600 ly

◻ Ref. Neb.	○ Galaxy	• 10	● 7	● 4
◇ Dark Neb.	○ Galaxy Gr.	• 11	● 8	● 5
● Globule	● Quasar	• 9	● 9	● 6
○ Open Cl.	● Planetary			
● Globular Cl.	◻ HII Region			
× Skymark	◻ SN Remnant			