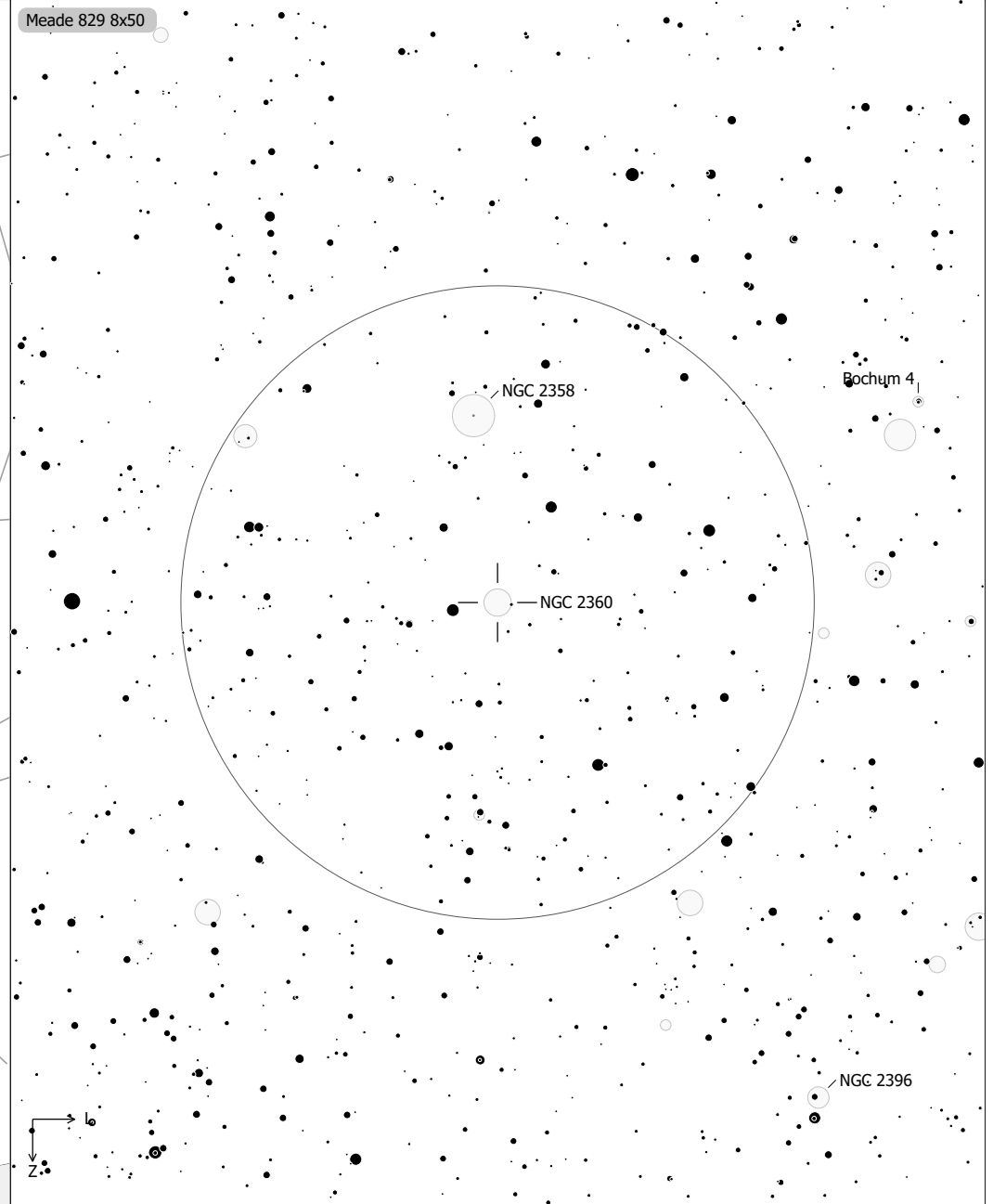
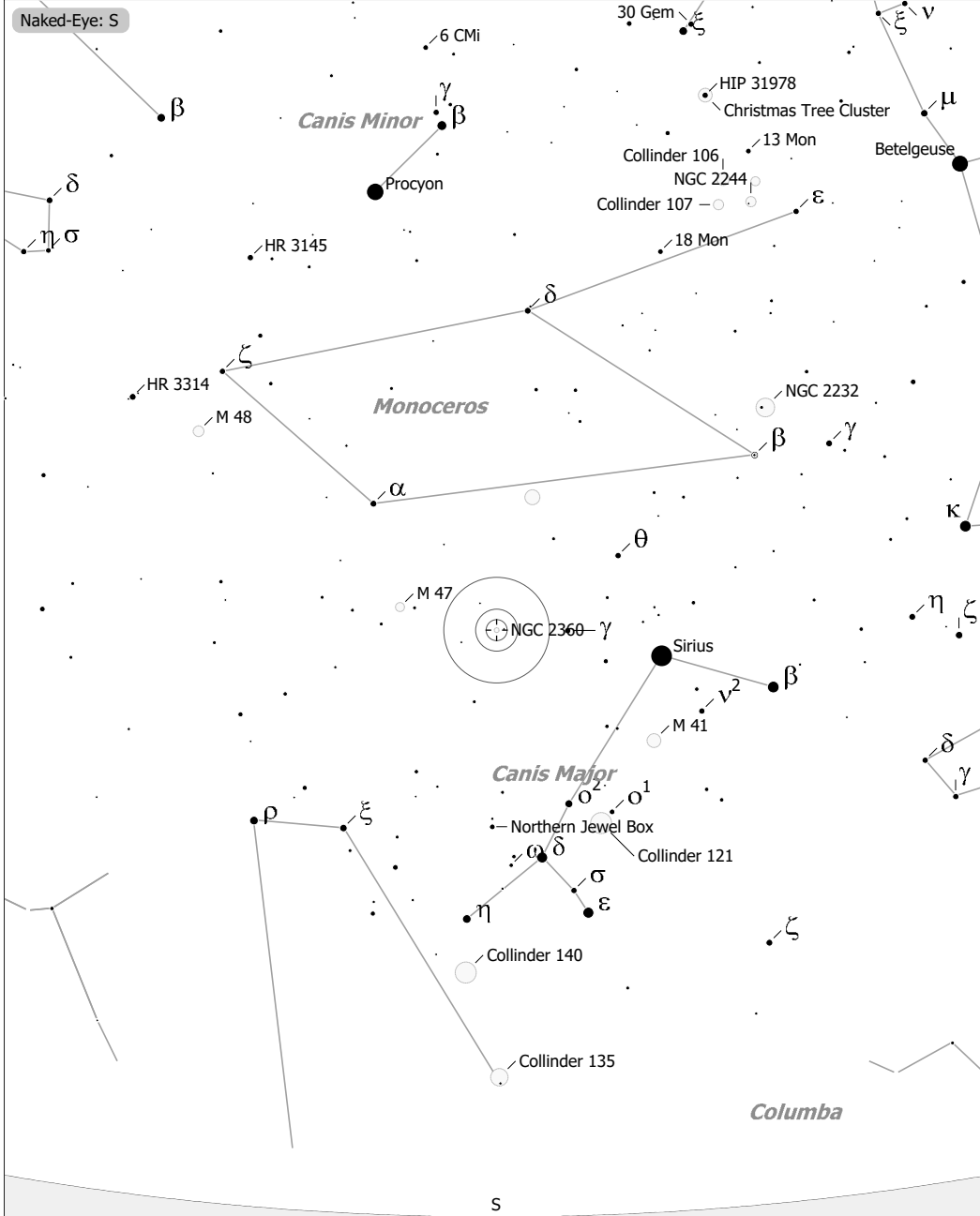


Objekte des Monats: Carolines Sternhaufen (NGC 2360)



NGC 2360 (Open Cluster)
 aka Collinder 134, H VII-12, Melotte 64, Raab 51, OCL 589
 R.A. 07h17m43.0s Dec. -15°38'30" J2000 (CMa)
 Magnitude: 6.60 Size: 13.0' Distance: 6200 ly

- | | | | | |
|----------------|---------------|------|-----|-----|
| ◇ Dark Neb. | ○ Galaxy | ● 9 | ● 6 | ● 3 |
| ● Globule | ● Quasar | ● 10 | ● 7 | ● 4 |
| ○ Open Cl. | ● Planetary | ● 8 | ● 5 | |
| ● Globular Cl. | □ H II Region | | | |
| × Skymark | □ SN Remnant | | | |
| | □ Ref. Neb. | | | |