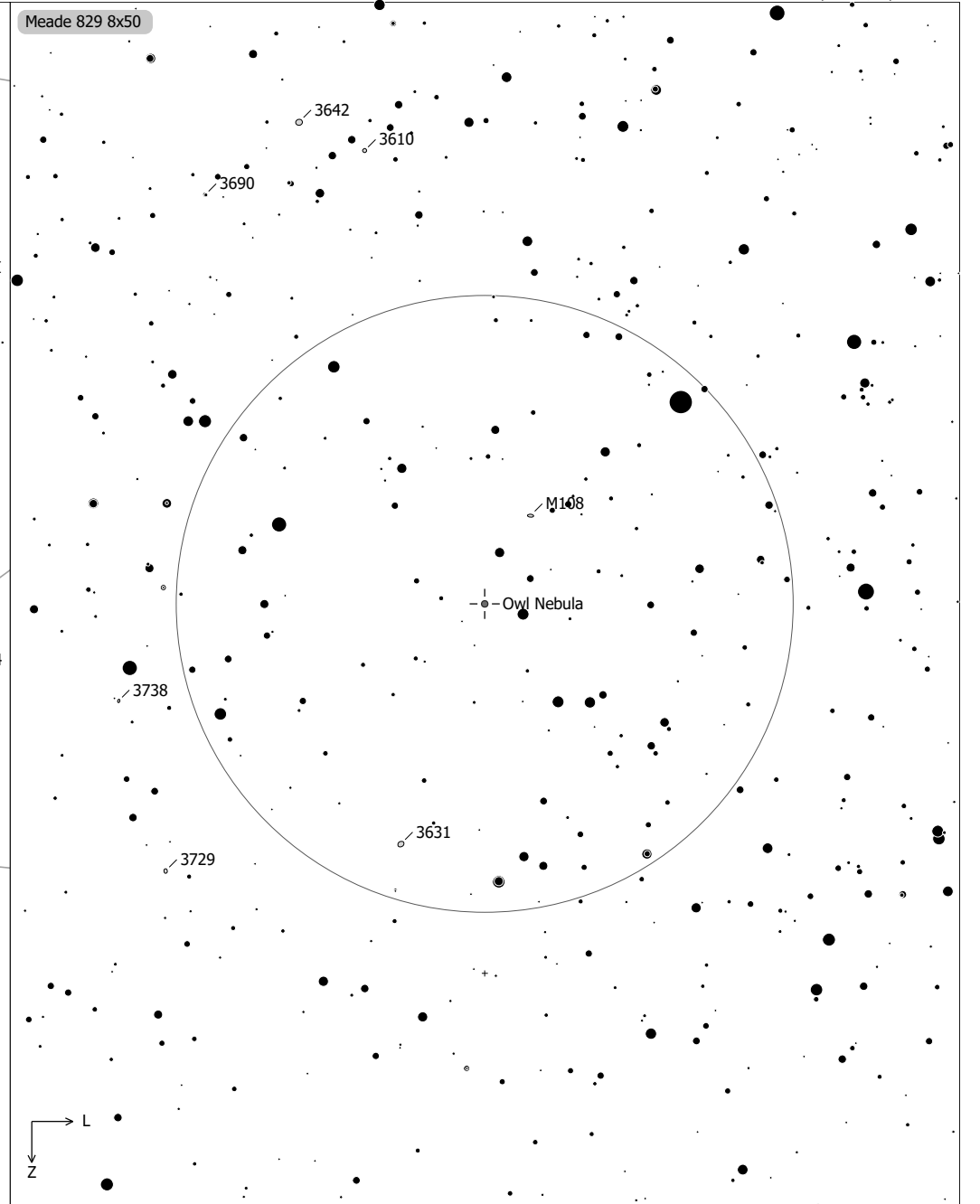
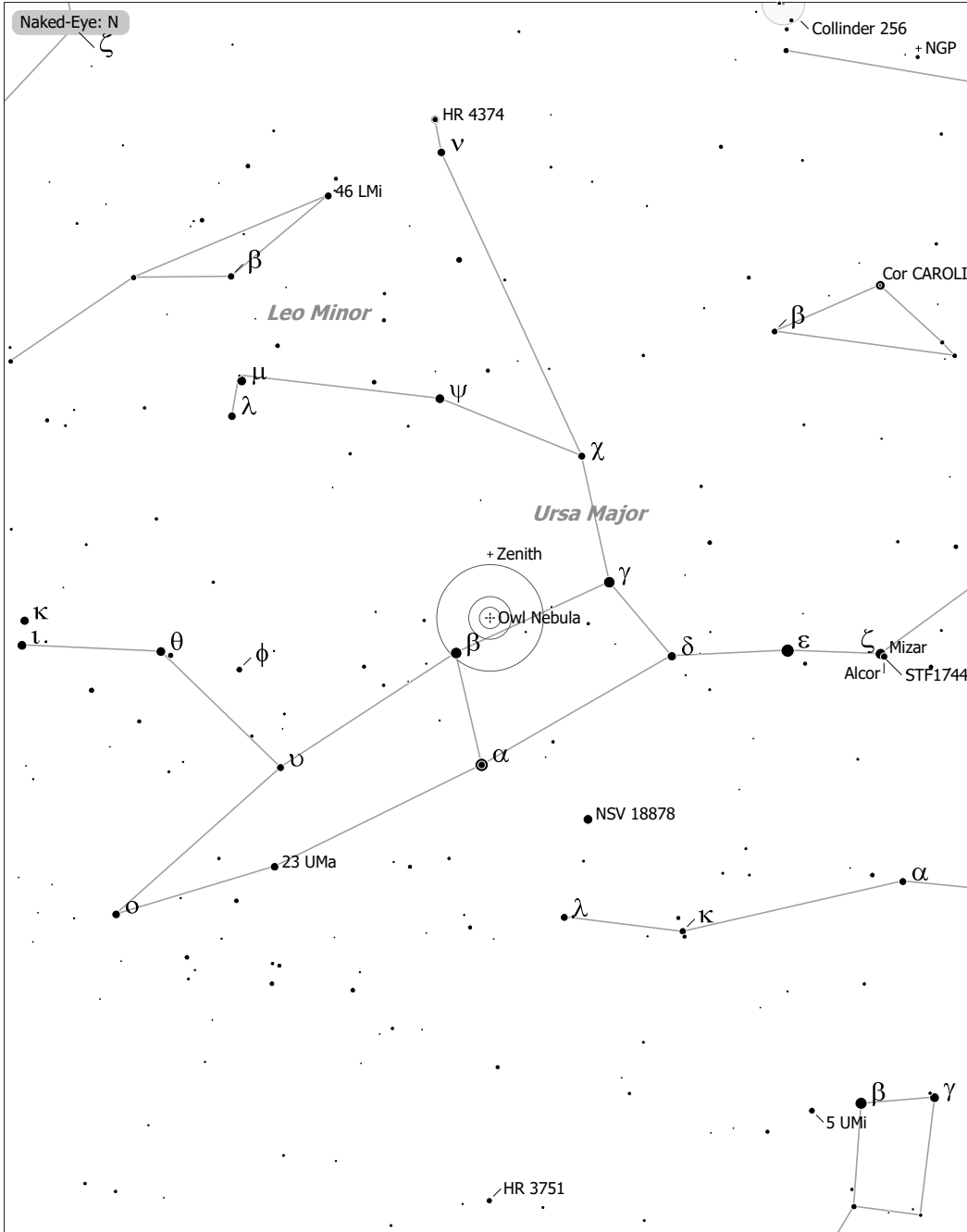


Objekte des Monats: Eulennebel (Messier 97)



Owl Nebula (Planetary Nebula)
 aka M 97, NGC 3587, PN G148.4+57.0, PK 148-57.1, ARO 25
 R.A. 11h14m47.7s Dec. +55°01'08" J2000 (UMa)
 Magnitude: 9.70 Size: 3.4' SBr: 21.0 Mag/arcsec² Distance: 2000 ly

✕ Skymark	◻ SN Remnant	☄ Comet	• 10	• 7	• 4
◻ Ref. Neb.	◊ Dark Neb.	○ Galaxy	• 11	• 8	• 5
◊ Dark Neb.	○ Galaxy Gr.	• Quasar	• 9	• 6	
• Globule	• Planetary	◻ HII Region			
• Open Cl.	• Globular Cl.				