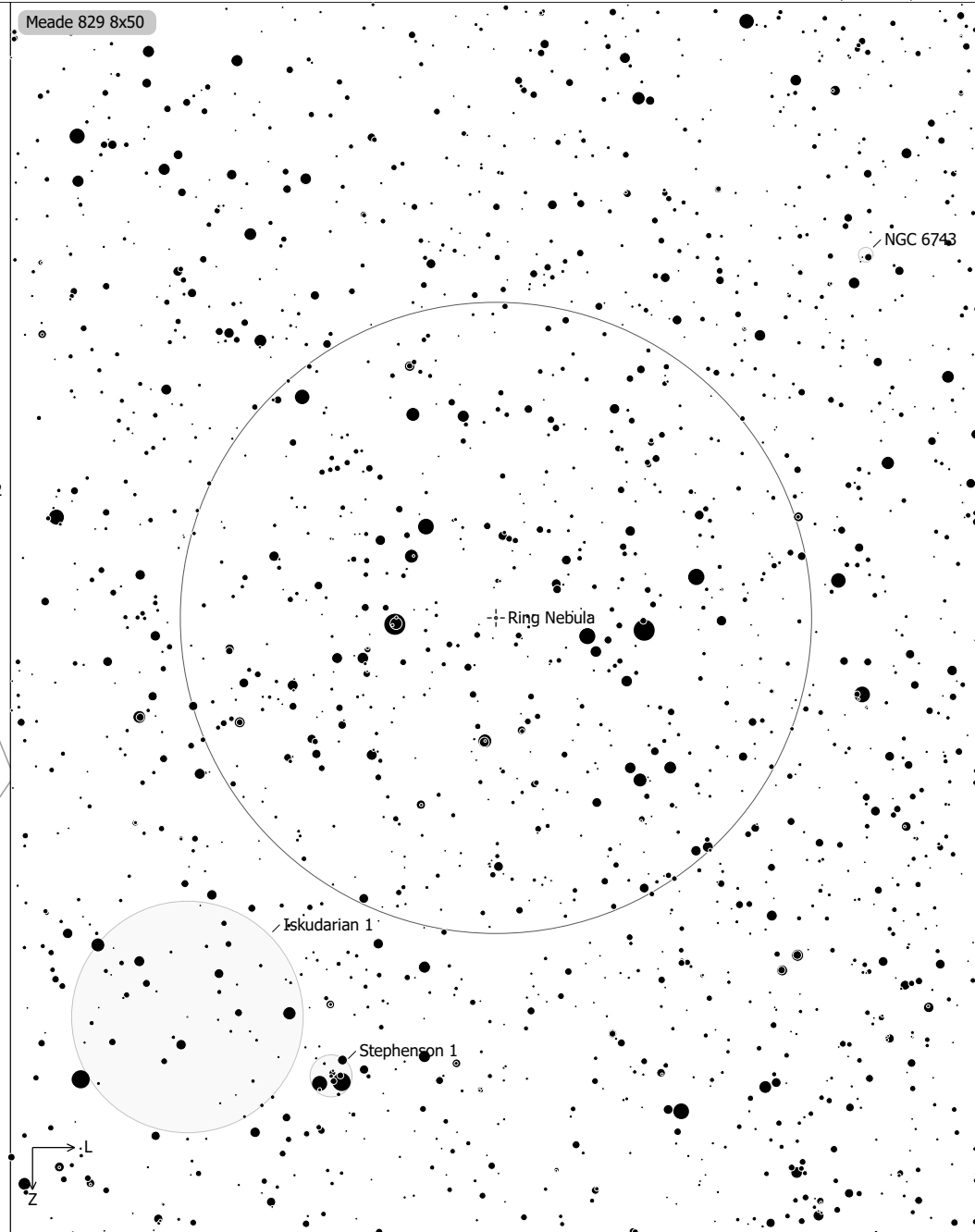
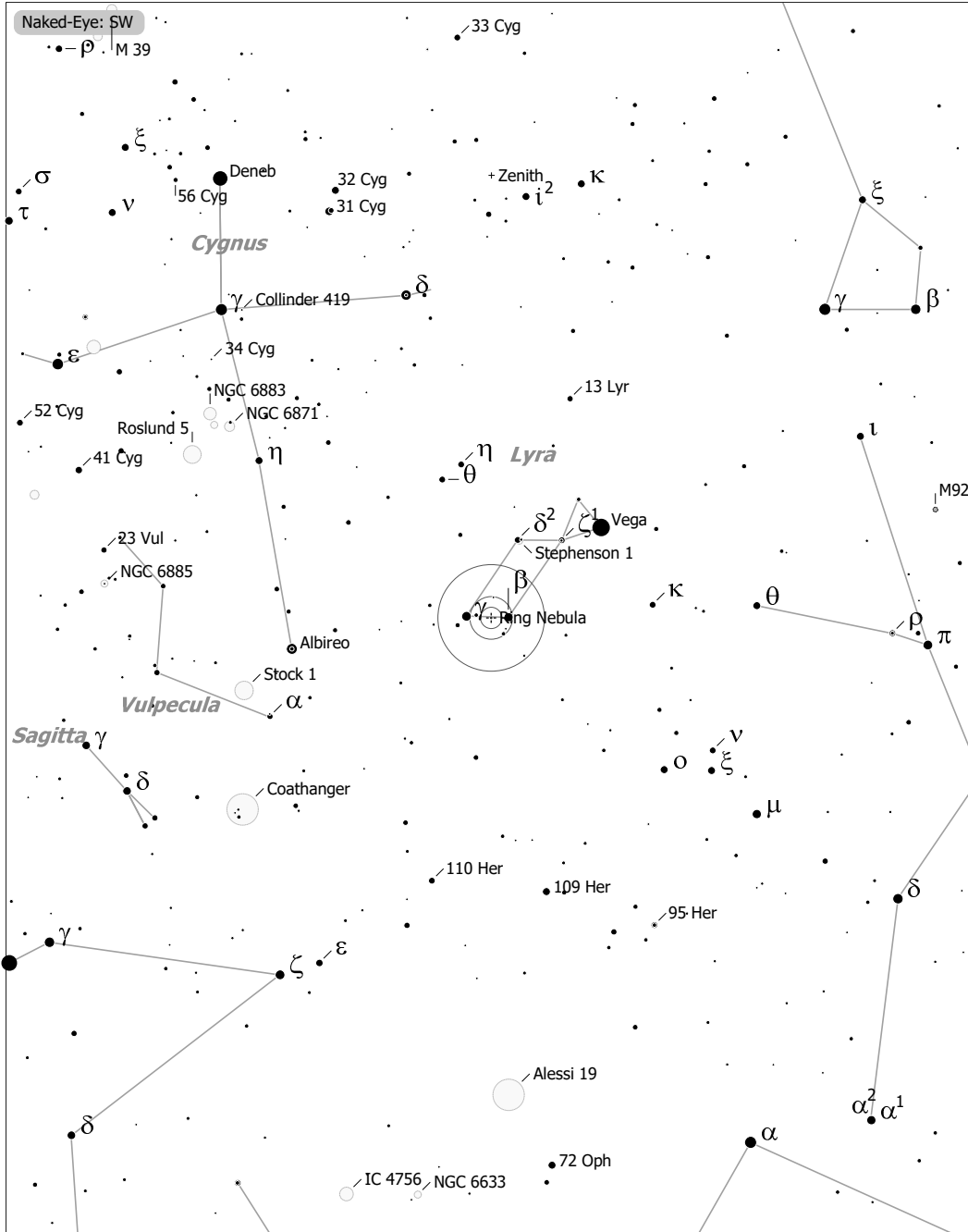


Objekte des Monats: Ringnebel (Messier 57)



Ring Nebula (Planetary Nebula)
 aka M 57, NGC 6720, PN G063.1+13.9, PK 063-13.1, ARO 9
 R.A. 18h53m35.1s Dec. +33°01'45" J2000 (Lyr)
 Magnitude: 9.40 Size: 1.4' SBr: 18.8 Mag/arcsec² Distance: 2600 ly

- | | | | | |
|----------------|--------------|------|-----|-----|
| ◻ Ref. Neb. | ○ Galaxy | • 10 | ● 7 | ● 4 |
| ◇ Dark Neb. | ○ Galaxy Gr. | • 11 | ● 8 | ● 5 |
| ● Globule | ● Quasar | • 9 | ● 9 | ● 6 |
| ○ Open Cl. | ● Planetary | | | |
| ● Globular Cl. | ◻ HII Region | | | |
| × Skymark | ◻ SN Remnant | | | |