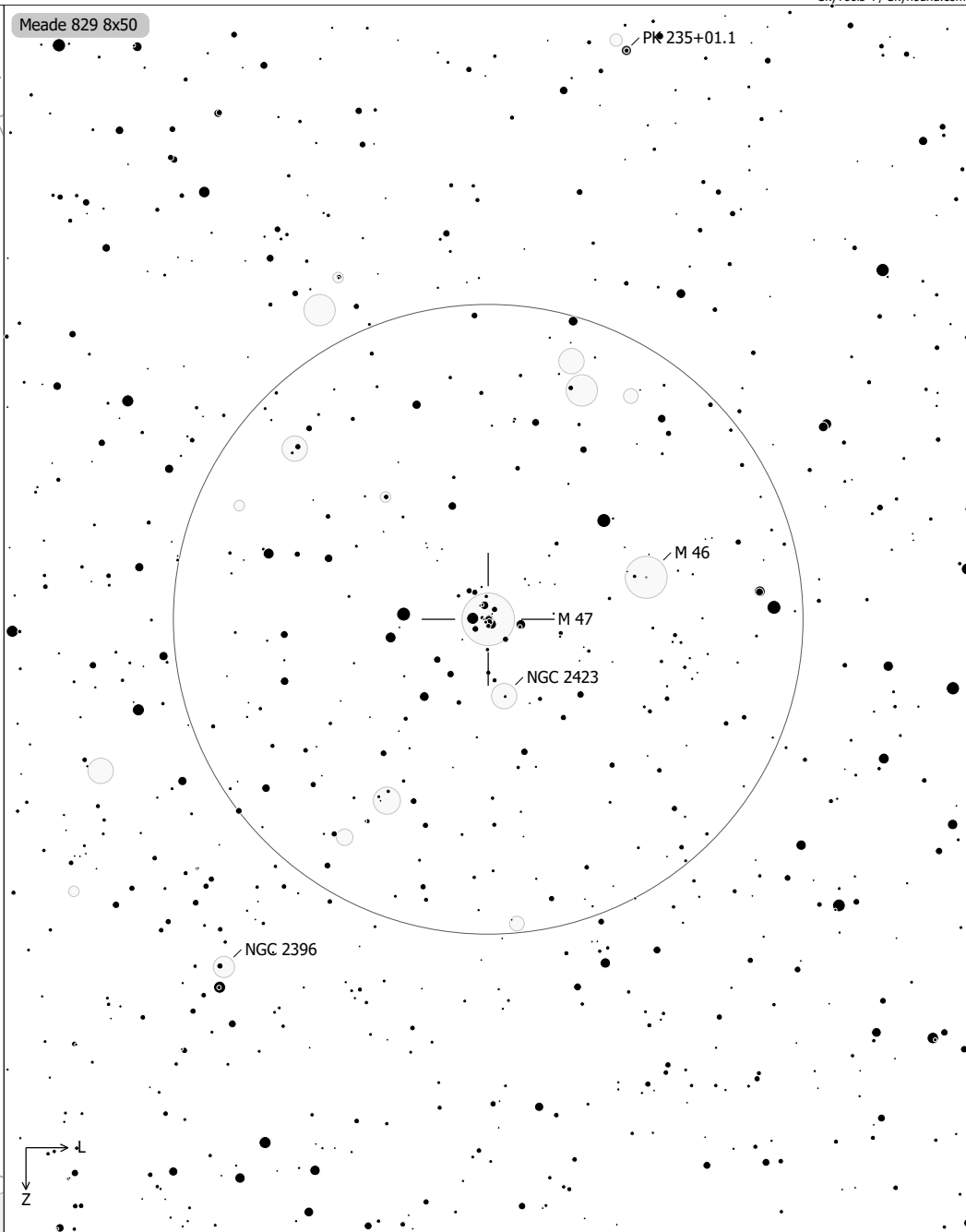
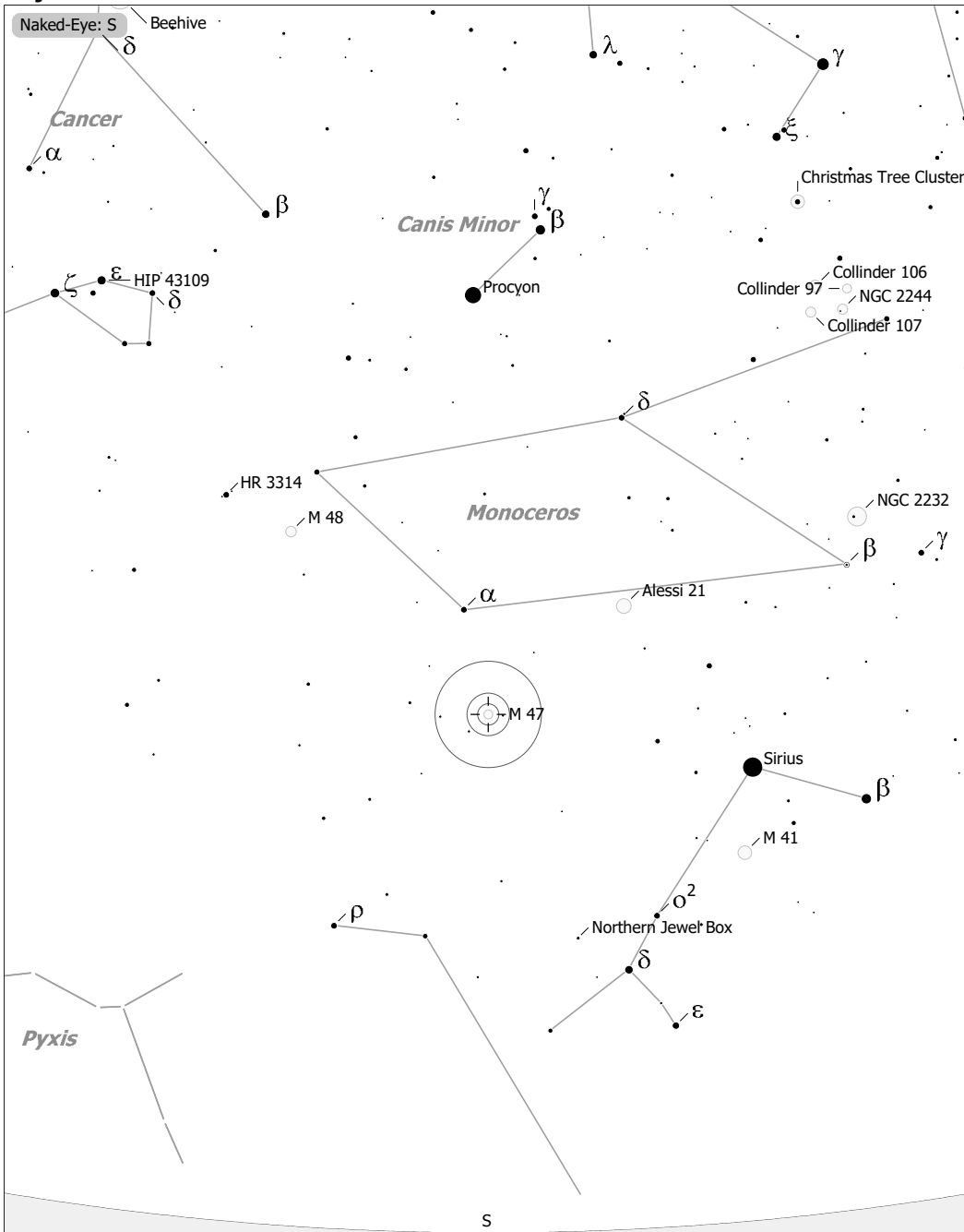


M 46 (Open Cluster)  
 aka NGC 2437, Collinder 159, Melotte 75, Raab 62, OCL 601  
 R.A. 07h41m46.0s Dec. -14°48'36" J2000 (Pup)  
 Magnitude: 5.90 Size: 20.0' Distance: 4500 ly

◻ ■ Ref. Neb.	○ Galaxy	● 9	● 6	● 3
◇ Dark Neb.	○ Galaxy Gr.	● 10	● 7	● 4
● Globule	● Quasar	● 8	● 5	
○ Open Cl.	● Planetary			
● Globular Cl.	◻ H II Region			
× Skymark	◻ SN Remnant			



M 47 (Open Cluster)  
 aka NGC 2422, Collinder 152, H VIII-38, Melotte 68, Raab 55, OCL 596  
 R.A. 07h36m35.0s Dec. -14°29'00" J2000 (Pup)  
 Magnitude: 4.40 Size: 25.0' Distance: 1600 ly

□ ■ Ref. Neb.	○ ● Galaxy	● 9	● 6	● 3
◇ Dark Neb.	○ Galaxy Gr.	● 10	● 7	● 4
● Globule	● Quasar	● 8	● 5	
○ Open Cl.	● Planetary			
● Globular Cl.	□ H II Region			
× Skymark	□ SN Remnant			