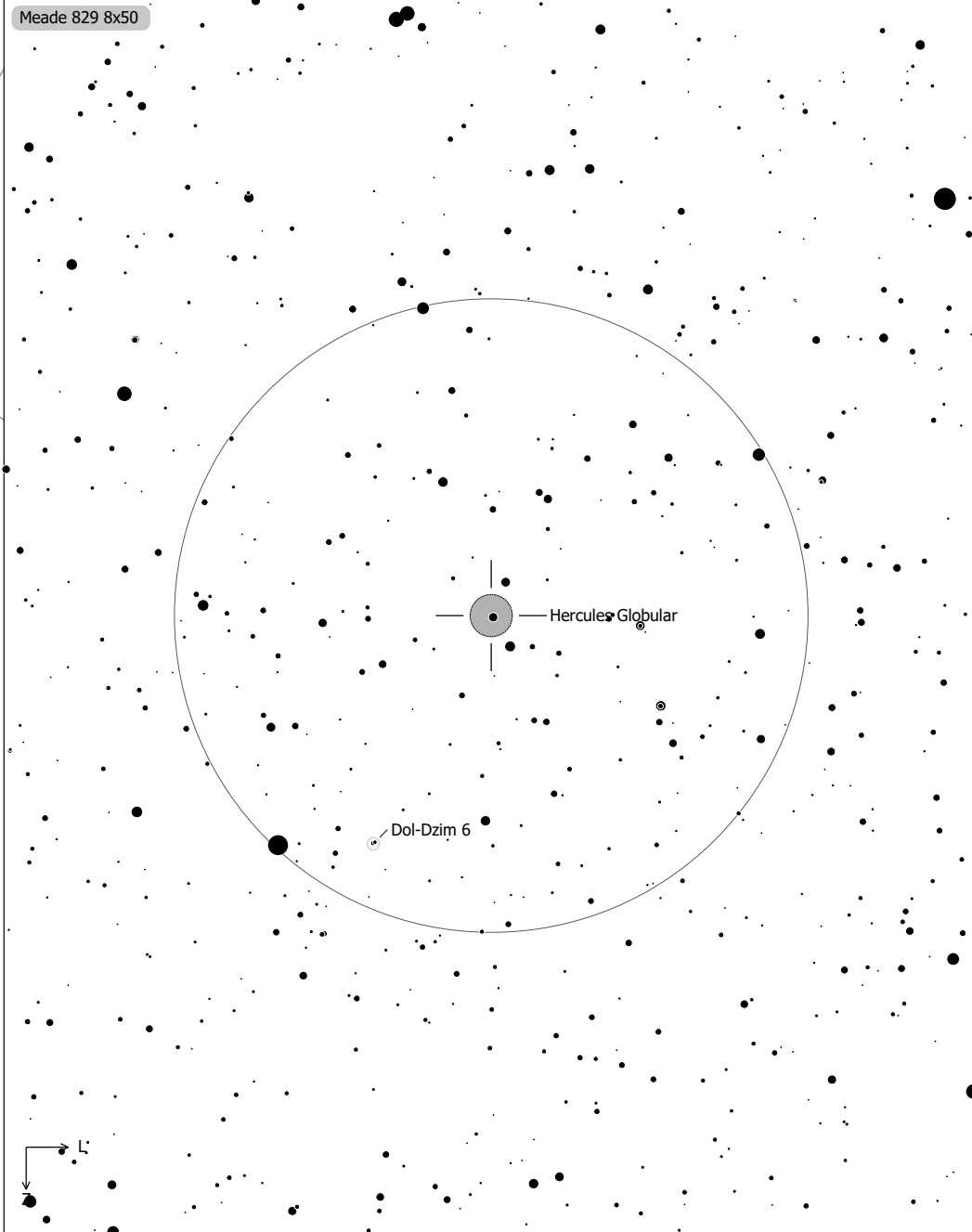
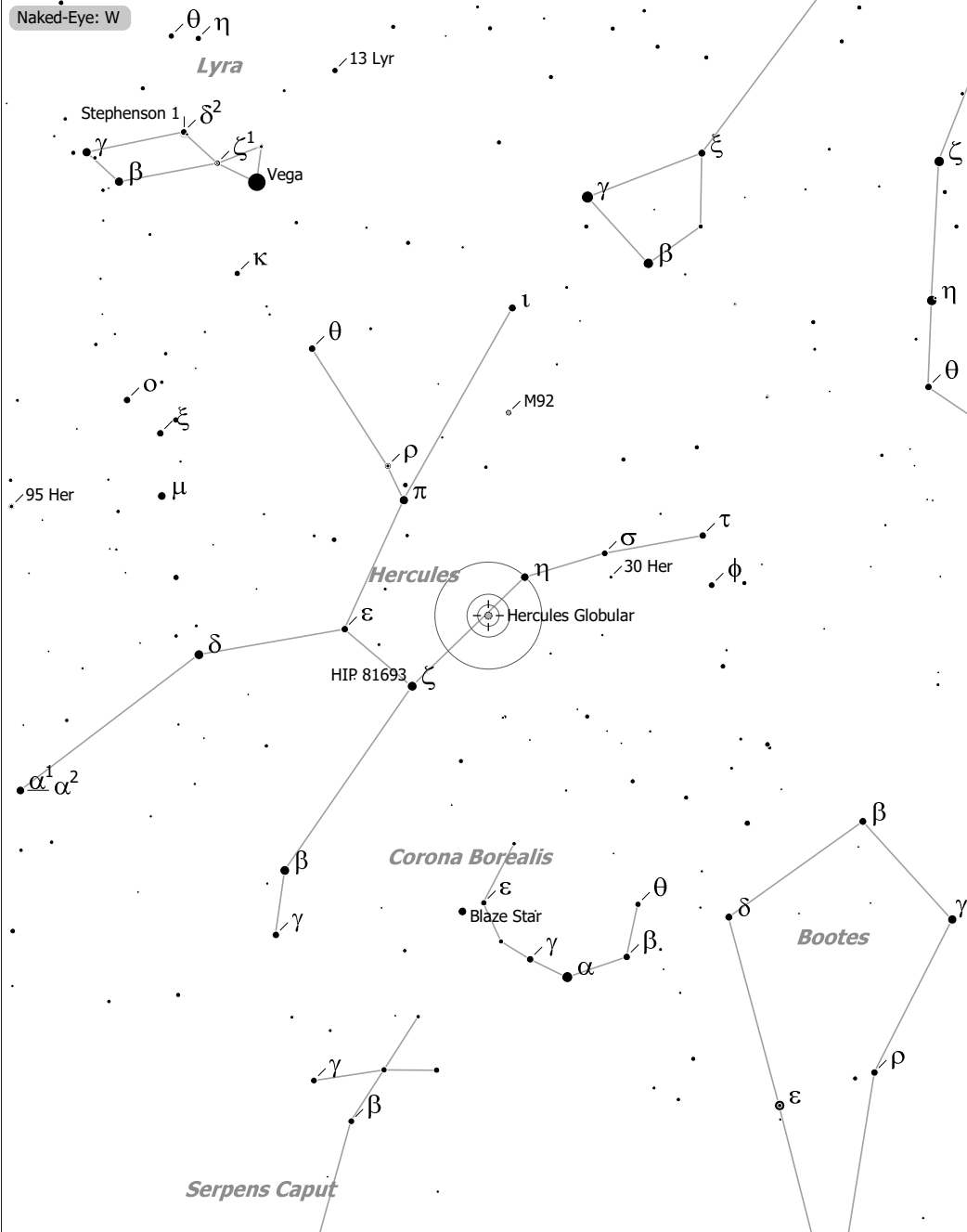


Objekte des Monats: Herkuleshaufen (Messier 13)



Hercules Globular (Globular Cluster)
 aka Keystone Cluster, M 13, NGC 6205
 R.A. 16h41m41.0s Dec. +36°27'36" J2000 (Her)
 Magnitude: 5.80 Size: 20.0' Distance: 26000 ly

□ = Ref. Neb.	○ = Galaxy	● 9	● 6	● 3
◇ = Dark Neb.	○ = Galaxy Gr.	● 10	● 7	● 4
● = Globule	● = Quasar	● 8	● 5	
○ = Open Cl.	● = Planetary			
● = Globular Cl.	□ = HII Region			
× = Skymark	□ = SN Remnant			