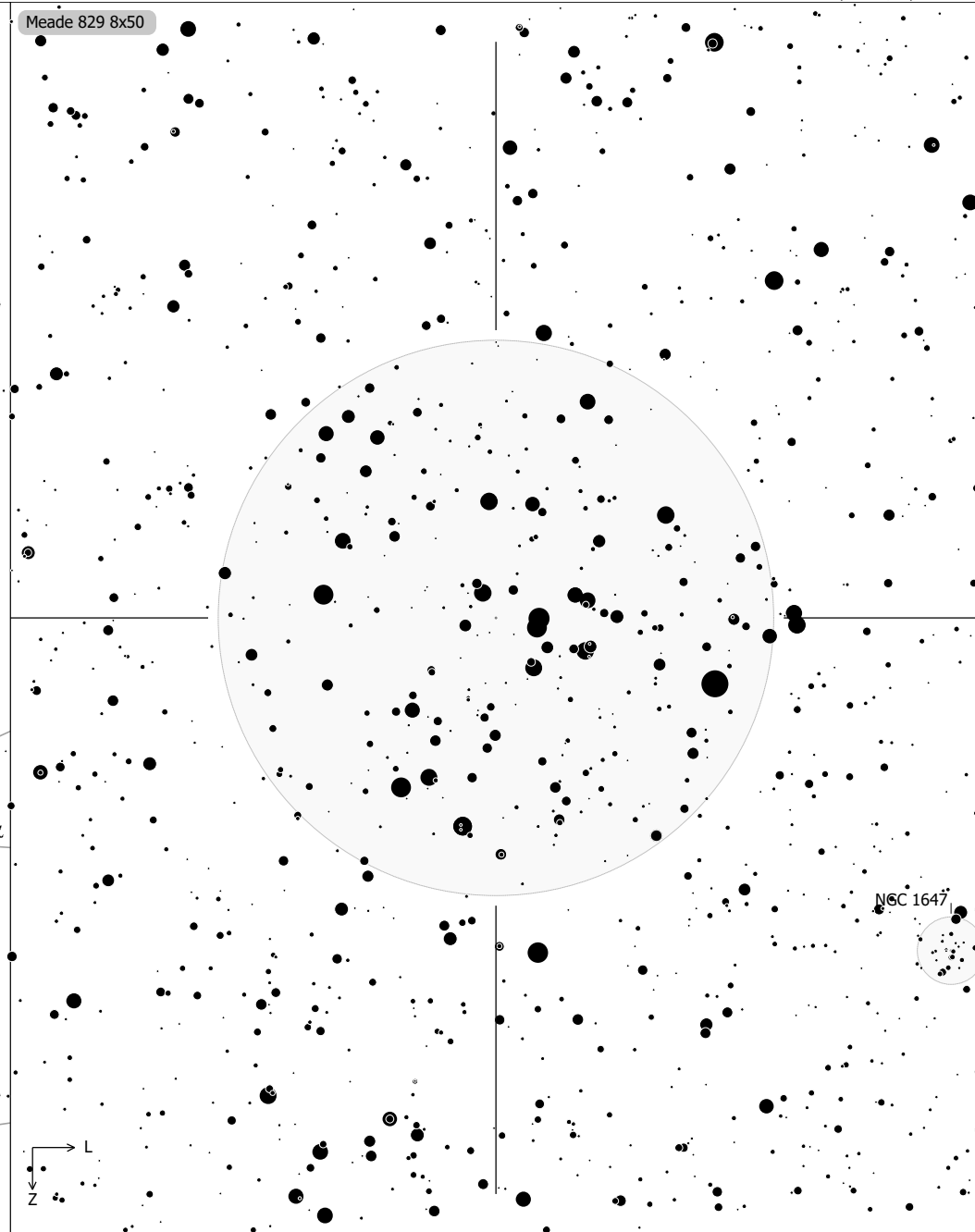
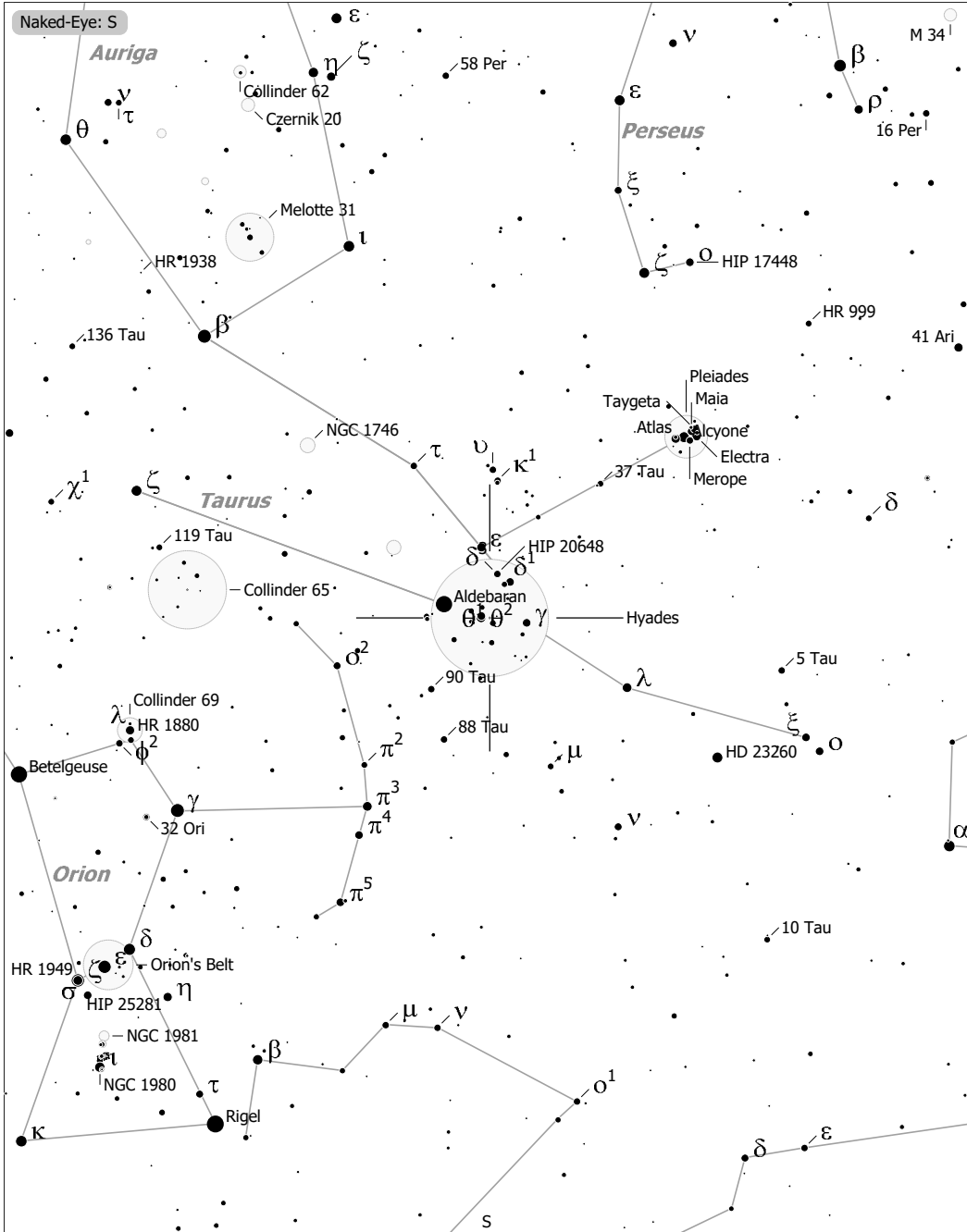


Objekte des Monats: Hyaden (Melotte 25)



Hyades (Open Cluster)
 aka Collinder 50, Melotte 25, OCL 456
 R.A. 04h26m54.0s Dec. +15°52'00" J2000 (Tau)
 Magnitude: 0.80 Size: 5.5° Distance: 150 ly

- | | | | | |
|----------------|--------------|------|-----|-----|
| ◻ Ref. Neb. | ○ Galaxy | • 10 | ● 7 | ● 4 |
| ◇ Dark Neb. | ○ Galaxy Gr. | • 11 | ● 8 | ● 5 |
| ● Globule | ● Quasar | • 9 | ● 9 | ● 6 |
| ○ Open Cl. | ● Planetary | | | |
| ● Globular Cl. | ◻ HII Region | | | |
| × Skymark | ◻ SN Remnant | | | |